



SEAT ARONA

Pricing and specification list

Contents



Why easymove?	03
Pick your trim	04
Pick your engine	13
Pick your colour	14
Upholstery, wheels and tyres	16
Equipment	17
Options	25
SEAT CONNECT	26
Warranties, service plans and insurance	29
Vehicle excise duty	32
Benefit in kind tax	33
Technical data	34



Why **easy**move?

We've made it really simple to pick the SEAT Arona that's right for you. There are four individual trims, each with their own unique equipment and appeal.

- 1** Pick the trim that sounds like your kind of car.
- 2** Choose the engine that suits you.
- 3** Personalise your Arona with your favourite colour and contrasting roof.

And that's it. It couldn't be easier to do your thing.



1. Pick your trim



01. **SE.** The Essential One.



02. **SE TECHNOLOGY.** The Smart One.



03. **FR FIRST EDITION.** The Iconic One.



04. **FR SPORT.** The Dynamic One.

ARONA SE

The Essential One



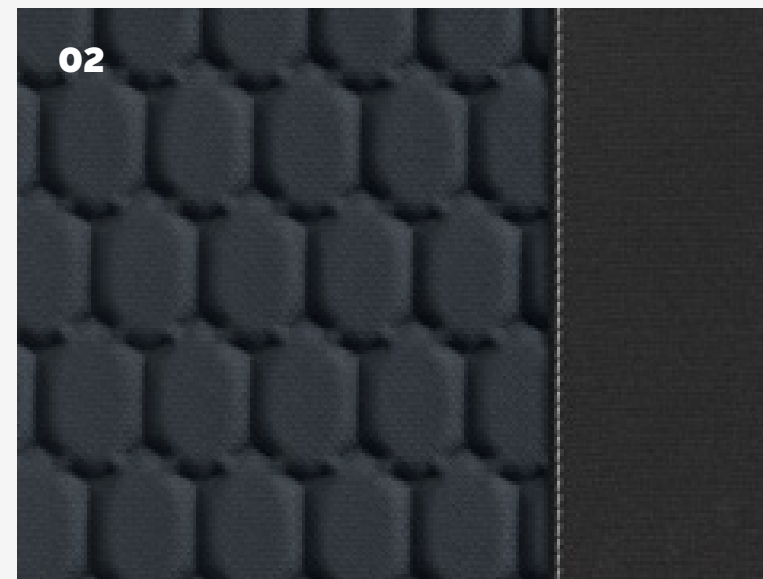
From £23,105*

The Arona SE is designed to make everyday driving effortless and enjoyable. Equipped with 16" 'Design' silver alloy wheels it combines style and stability for every journey. Inside, you'll find comfort seats, an 8.25" touchscreen display, and an 8" digital cockpit, giving you a modern, connected driving experience. For peace of mind, the Arona SE includes Front Assist to help you maintain a safe distance, rear parking sensors for easier manoeuvring, and Full Link connectivity, so you can seamlessly integrate your smartphone with the car's system.

01



02



01. 16" 'Design' silver alloy wheels.

02. Aurora cloth (Black & blue embossed).

*Price is for Arona SE 1.0 TSI EVO 95PS.



Model shown: Arona SE in Fiord Blue.

Key specification for the SE trim



Wheels and tyres

- 16" 'Design' alloy wheels in Brilliant silver with 205/60 R16 tyres

Exterior equipment

- Contrast roof
- Door mirrors (electrically adjustable, folding and heated)
- Full LED automatic headlights with coming and leaving home feature and LED daytime running lights
- Metallic paint
- Front fog lights with cornering functionality

Infotainment

- Media system colour - 8.25" colour touchscreen
- Bluetooth® audio streaming and handsfree system
- AM/FM radio with DAB (Digital Audio Broadcasting)
- Full Link smartphone integration
- 8" Digital cockpit
- SEAT Connect: Safety, Service and Remote Access
- Six speakers

Seats and trim

- Leather steering wheel, gear knob and handbrake
- Black headliner
- Coloured interior air vents – green
- Double boot floor
- Comfort seats in cloth

Functional and mechanical

- Cruise control and speed limiter
- Air conditioning
- Electric front and rear windows

Safety and security

- Central locking w/ radio remote control, interior controls and SAFELOCK
- Safe & Driving Pack (S)
Consisting of:
 - Attention and Drowsiness Assist (ADA)
 - Windshield wiper intermittent control with light sensor
 - Electronic Stability Control (ESC)
 - Extended and proactive pedestrian and cyclist protection
 - Lane Assist
 - Front Assist (forward collision warning) and Autonomous Emergency Braking (AEB)
 - Dynamic road sign display
 - Rear parking sensors
 - Park distance control
 - Multifunction camera
- Hill hold control
- Driver & Front passenger airbags
- Side airbags in front with curtain airbag

The SEAT CONNECT services can be operated only by using available public communication technologies. Please note that due to development of these technologies, especially mobile networks, SEAT cannot guarantee consistent availability in all countries for the duration of SEAT CONNECT services. Possible changes in technology may cause permanent unavailability of them.

ARONA SE TECHNOLOGY

The Smart One



From £24,150*

Bring your world into the car with the new Arona SE Technology. Enjoy refined details that elevate every journey: sleek dark-tinted rear windows, a stunning 9.2" touchscreen for effortless control, and ambient lighting throughout the cabin with illuminated air vent surrounds for a truly premium feel. Stay connected and in control with Wireless Full Link, giving you instant access to calls, messages, music, and more – completely cable-free, while the rear-view camera makes reversing simple and stress-free. And with satellite navigation, you'll always know the best way forward.



- 1. 16" 'Design' silver alloy wheels.
 - 2. Comfort seats in Aurora cloth (black and blue embossed textile).
- *Price is for Arona SE Technology 1.0 TSI EVO 95PS.



Model shown: Arona SE Technology in Graphene Grey metallic paint.

In addition to the SE trim



Infotainment

- Navigation system
 - 9.2" colour touchscreen and proximity sensor
 - Navigation system with 3D map display and voice control
- **SEAT CONNECT: Safety, Service, Remote and Online Navigation Services**
 - Online map update
 - Online traffic information
 - Online route calculations
 - Parking and petrol stations

Exterior equipment

- Dark tinted rear windows

Interior equipment

- Interior ambient lighting
- Interior light in footwell in front, central console and door panel

Functional and mechanical

- Rear view camera



The SEAT Connect services can be operated only by using available public communication technologies. Please note that due to development of these technologies, especially mobile networks, SEAT cannot guarantee consistent availability in all countries for the duration of SEAT Connect services. Possible changes in technology may cause permanent unavailability of them.

ARONA FR FIRST EDITION

The Iconic One

From £27,480*

Ignite your drive with the Aroa FR First Edition – where sporty style meets cutting-edge tech. Turn heads with SEAT Design Full LED automatic headlamps, paired with 17" 'Dynamic' silver alloy wheels for a bold, confident look. Inside, feel the thrill with sports bucket seats, heated at front for your comfort. Enjoy ultimate convenience with Keyless entry and go, a wireless phone charger, and dual-zone climate control to keep everyone comfortable. Parking is effortless thanks to Park Assist with front and rear sensors and a rear-view camera, while the SEAT Drive Profile lets you customise your driving style.



1. 17" 'Dynamic' silver alloy wheels.
2. Sport bucket seats in Nuance (black and grey embossed textile).

*Price is for Aroa FR First Edition 1.0 TSI 115PS.



Model shown: Aroa FR First Edition in Liminal Red metallic paint.

In addition to the SE Technology trim



Wheels and tyres

- 17" 'Dynamic' 26/3 alloy wheels in Brilliant silver with 205/55 R17 tyres

Exterior equipment

- Coming home and leaving headlight function
- SEAT Design Full LED automatic headlamps with dynamic headlight range control, coming and leaving home feature and LED daytime running lights
- Twin exhaust pipe styling (double-flow exhaust pipe)

Interior equipment

- Front courtesy light with front reading light
- Illuminated air vent surrounds

Seats and trim

- Leather steering wheel (flat bottomed, perforated with red stitching and FR logo) and leather gear knob and handbrake
- Sports bucket seats in Nuance cloth (black and grey)
- Heated front seats

Functional and mechanical

- Dual-zone climate control
- Seat Drive Profile
- Four different modes (Normal – Sport – Eco – Individual)
- Park assist – front & rear parking sensors
- KESSY (Keyless entry and go) with SAFELOCK



ARONA FR SPORT

The Dynamic One



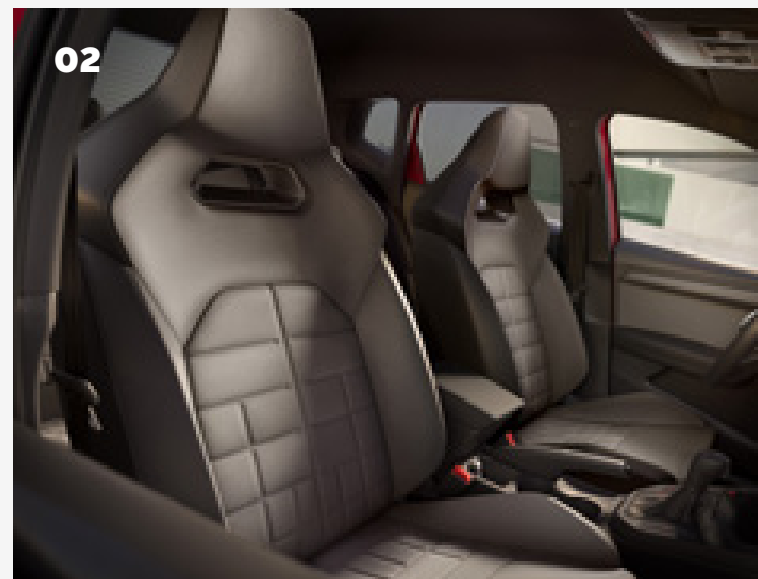
From £28,505*

Make a statement that's impossible to ignore with Aroa FR Sport. Express your style with striking 18" 'Performance' machined alloy wheels in black, complemented by sport bucket seats and evocative twin exhaust pipes for a bold, sporty look. Inside, take control with a 10" Digital Cockpit, giving you a driver-focused view of performance and navigation – all in one sleek display.

01



02



01. 18" Performance Machined Alloy wheels.

02. Sports bucket seats in Nuance cloth (black & grey).

*Price is for Aroa FR Sport 1.0 TSI 115PS.



Model shown: Aroa FR Sport in Oniric Grey metallic paint.

In addition to the FR First Edition trim



Wheels and tyres

- 18" 'Performance' machined alloy wheels in black with 215/45 R18 tyres

Infotainment

- 10" Digital cockpit



2. Pick your engine



	Derivative	Fuel	WLTP CO ₂ [g/km]	WLTP Combined [mpg]	Insurance group [1-50]	BIK 2025/26*	Basic price	VAT @ 20%	Retail price (P11D value)	1st Year RFL Rate 2025/26	1st reg fee 2025/26	Recommended On The Road Price
SE	1.0 TSI EVO 95PS	P	120	47.9-53.3	11E	30%	£18,841.67	£3,768.33	£22,610.00	£440.00	£55.00	£23,105.00
	1.0 TSI DSG-auto 115PS	P	126	47.9-51.4	14E	31%	£20,120.83	£4,024.17	£24,145.00	£440.00	£55.00	£24,640.00
SE Technology	1.0 TSI EVO 95PS	P	120	47.9-53.3	11E	30%	£19,712.50	£3,942.50	£23,655.00	£440.00	£55.00	£24,150.00
	1.0 TSI DSG-auto 115PS	P	126	47.9-51.4	14E	31%	£20,991.67	£4,198.33	£25,190.00	£440.00	£55.00	£25,685.00
FR First Edition	1.0 TSI 115PS	P	121	48.7-53.3	15E	30%	£22,487.50	£4,497.50	£26,985.00	£440.00	£55.00	£27,480.00
	1.0 TSI DSG-auto 115PS	P	127	47.9-50.4	15E	31%	£23,266.67	£4,653.33	£27,920.00	£440.00	£55.00	£28,415.00
	1.5 TSI DSG-auto 150PS	P	129	47.1-50.4	20E	31%	£24,100.00	£4,820.00	£28,920.00	£440.00	£55.00	£29,415.00
FR Sport	1.0 TSI 115PS	P	125	48.7-51.4	15E	31%	£23,341.67	£4,668.33	£28,010.00	£440.00	£55.00	£28,505.00
	1.0 TSI DSG-auto 115PS	P	130	47.9-49.6	15E	32%	£24,120.83	£4,824.17	£28,945.00	£440.00	£55.00	£29,440.00
	1.5 TSI DSG-auto 150PS	P	132	47.1-48.7	20E	32%	£24,954.17	£4,990.83	£29,945.00	£540.00	£55.00	£30,540.00

Some derivatives only available from stock.
*BIK value is based on WLTP CO₂ and applicable from 16/12/2025.

The Recommended 'On The Road' price includes delivery charge to Retailer and number plates, one year's Road Fund Licence at the 1st year rate (£0 – £5,490 depending on the CO₂ output of the vehicle), and the new vehicle registration fee (£55). VAT is calculated at 20.0%. SEAT may change RRP's at any time (this includes where there are government changes in regulation and/or legislation). There may be a delay to any RRP displaying correctly on our materials. Always obtain prices from your chosen SEAT Retailer. Figures shown are for comparability purposes; only compare fuel consumption and CO₂ figures with other vehicles tested to the same technical procedures. These figures may not reflect real life driving results, which will depend upon a number of factors including the accessories fitted (post-registration), variations in weather, driving styles and vehicle load. Data correct at 16/12/2025 . Figures quoted are for a range of configurations and are subject to change due to ongoing approvals/changes.

3. Pick your colour



Magnetic Tech Grey²

- SE
- SE Tech
- FR
- FRS



Midnight Black²

- SE
- SE Tech
- FR
- FRS



Fiord Blue¹

- SE
- SE Tech
- FR
- FRS



Oniric Grey³

- SE
- SE Tech
- FR
- FRS



Glacial White²

- SE
- SE Tech
- FR
- FRS



Graphene Grey³

- SE
- SE Tech
- FR
- FRS



Liminal Red^{3*}

- SE
- SE Tech
- FR
- FRS

- SE SE
- SE Tech SE Technology
- FR FR First Edition
- FRS FR Sport

1 Non-metallic 2 Metallic 3 Special Metallic
Print and screen view do not provide an exact representation of colour.
Please refer to the paint colour moulds at your local SEAT Retailer.

*Coming early 2026.

Pick your roof colour



Manhattan Grey²

- SE
- SE Tech
- FR
- FRS



Midnight Black²

- SE
- SE Tech
- FR
- FRS

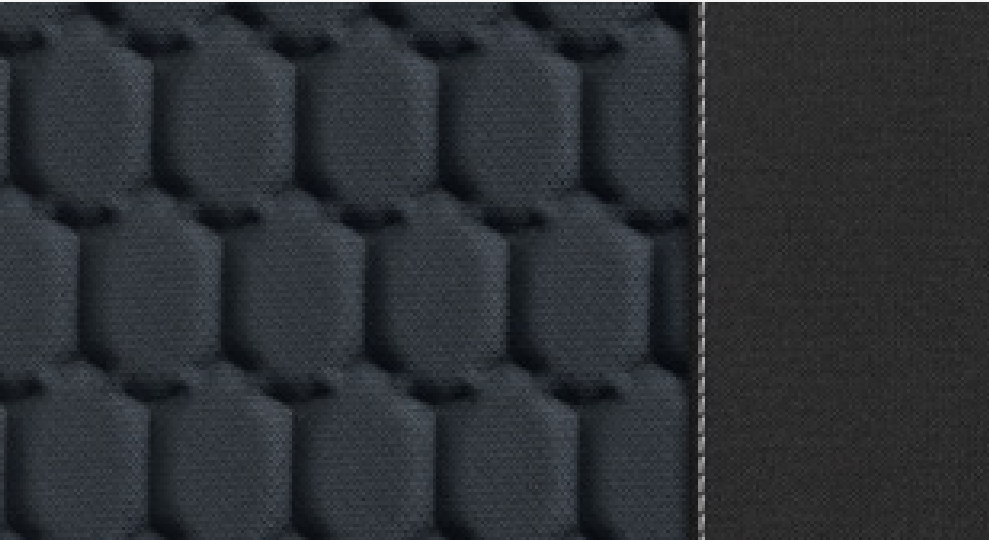
- SE SE
- SE Tech SE Technology
- FR FR First Edition
- FRS FR Sport

¹Non-metallic ²Metallic
There is no additional cost on any exterior colour or bi-colour roof.
Some colours only available from stock.

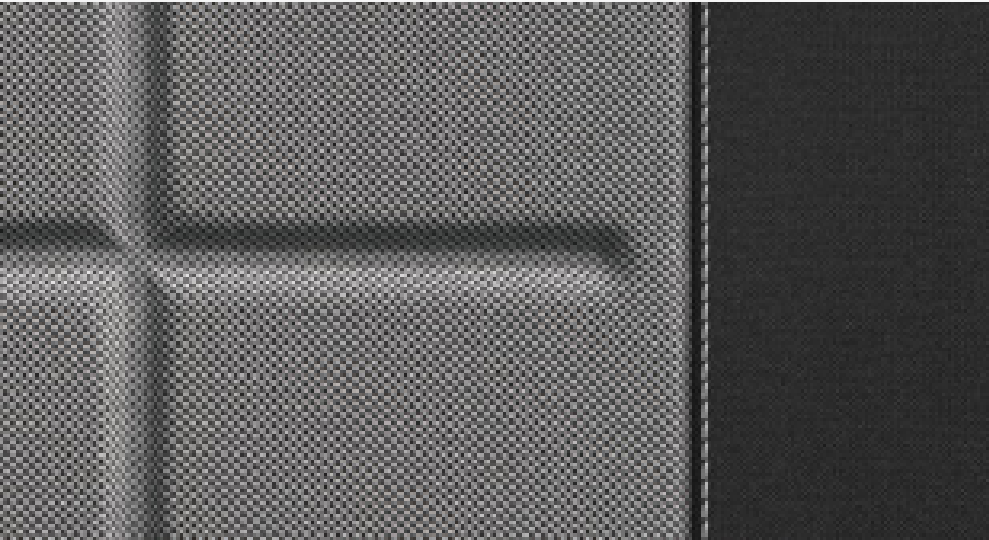
Body Colour	Roof Colour									
	SE		SE Technology		FR First Edition			FR Sport		
	Grey	Black	Grey	Black	Grey	Black	Body Coloured	Grey	Black	Body Coloured
Non-metallic paint										
Fiord Blue	–	○	–	○	–	○	○	–	○	○
Metallic paint										
Oniric Grey	○	○	○	○	○	○	○	○	○	○
Magnetic Tech Grey	–	○	–	○	–	○	○	–	○	○
Midnight Black	○	–	○	–	○	–	○	○	–	○
Glacial White	○	○	○	○	○	○	○	○	○	○
Graphene Grey	–	○	–	○	–	○	○	–	○	○

○ Optional – Not available

Upholstery



Aurora Blue



Nuance Black

	SE	SE Technology	FR First Edition	FR Sport
Comfort seats in Aurora cloth (black & blue embossed textile)	●	●	–	–
Sport Bucket seats in Nuance cloth (black & grey embossed textile)	–	–	●	●

Wheels and tyres

	SE	SE Technology	FR First Edition	FR Sport
16" 'Design' alloy wheels in Brilliant Silver with 205/60 R16 tyres	●	●	–	–
17" 'Dynamic' alloy wheels in Brilliant Silver with 205/55 R17 tyres	–	–	●	–
18" 'Performance' machined alloy wheels in Black with 215/45 tyres	–	–	–	●
Emergency tyre repair kit	●	●	●	●

● Standard ○ Optional – Not available

Equipment



	SE	SE Technology	FR First Edition	FR Sport
Exterior equipment				
Contrast roof	●	●	●	●
Dark tinted rear windows	–	●	●	●
Door mirrors (roof coloured)	●	●	●	●
Door mirrors (electrically adjustable, folding and heated)	●	●	●	●
Front foglights with cornering functionality and rear fog lights	●	●	●	●
Rear spoiler	●	●	●	●
Eco Full LED automatic headlights with coming and leaving home feature and LED daytime running lights	●	●	●	●
SEAT Full LED automatic headlights with dynamic headlight range control, coming and leaving home feature and LED daytime running lights	–	–	●	●
LED taillights	●	●	●	●
Licence plate lights	●	●	●	●
Hidden exhaust pipe	●	●	–	–
Twin exhaust pipe styling (double-flow exhaust pipe)	–	–	●	●
Metallic paint	●	●	●	●
Black roof rails and window surrounds	●	●	●	●

● Standard ○ Optional – Not available



	SE	SE Technology	FR First Edition	FR Sport
Infotainment				
Bluetooth® audio streaming and handsfree system	●	●	●	●
8" Digital cockpit	●	●	●	–
10" Digital cockpit	–	–	–	●
Wireless phone charger	–	–	●	●
8.25" Touchscreen display:				
- 8.25" touchscreen	●	–	–	–
- USB Type C sockets (data only)				
- DAB/AM/FM Radio				
9.2" Navigation system:				
- 9.2" touchscreen				
- USB Type C sockets (data only)	–	●	●	●
- Voice control				
- DAB/AM/FM Radio				
Full Link smartphone integration (Mirror Link, Wireless Apple CarPlay, Google Android Auto) with USB Type C cable for Apple and Android devices	●	●	●	●
Six speakers	●	●	●	●

● Standard ○ Optional – Not available



	SE	SE Technology	FR First Edition	FR Sport
Infotainment				
SEAT CONNECT (services included):				
Safety and Service:				
- Public emergency call				
- Breakdown call				
- Service scheduling	●	●	●	●
Remote Access:				
- Driving data				
- Parking position				
- Anti-theft alert				
Online Navigation Services:				
- Online infotainment				
- Online map update				
- Online traffic information	-	●	●	●
- Online route calculation				
- Parking and petrol stations				

The SEAT CONNECT services can be operated only by using available public communication technologies. Please note that due to development of these technologies, especially mobile networks, SEAT cannot guarantee consistent availability in all countries for the duration of SEAT CONNECT services. Possible changes in technology may cause permanent unavailability of them.

● Standard ○ Optional - Not available

Equipment



	SE	SE Technology	FR First Edition	FR Sport
Interior equipment				
Sunvisors with mirrors and card-holder in driver seat	●	●	●	●
Auto-dimming rear view mirror	●	●	●	●
Interior ambient lighting	–	●	●	●
Front courtesy light with front reading light	–	–	●	●
Interior chrome pack	●	●	●	●
Interior light in footwell in front & central console & door panel	–	●	●	●
Illuminated air vent surrounds	–	–	●	●

● Standard ○ Optional – Not available



	SE	SE Technology	FR First Edition	FR Sport
Seats and trim				
Comfort seats in cloth	●	●	–	–
Sports bucket seats in cloth	–	–	●	●
Heated front seats	–	–	●	●
Black headliner	●	●	●	●
Coloured interior air vents with ambient lighting (SE &SE Tech: green; FR and FR Sport: red)	●	●	●	●
Double boot floor	●	●	●	●
Leather steering wheel, gear knob & handbrake	●	●	–	–
Leather steering wheel (flat bottomed, perforated with red stitching and FR logo, with gearshift paddles on FR DSG) and leather gear knob & handbrake	–	–	●	●
Front seats with back storage pockets	●	●	●	●
Height-adjustable front seats	●	●	●	●
Split folding rear seats (60/40)	●	●	●	●
Storage pack:				
- Front centre armrest	–	–	●	●
- Mounting fixture in luggage compartment				

● Standard ○ Optional – Not available



	SE	SE Technology	FR First Edition	FR Sport
Functional and mechanical				
Cruise control and speed limiter	●	●	●	●
Lane keeping system	●	●	●	●
Rear view camera	–	●	●	●
Park assist – front parking sensors	–	–	●	●
Central locking w/ radio remote control, interior controls and SAFELOCK	●	●	●	●
KESSY (Keyless entry and go) with safelock	–	○	●	●
Manually controlled air conditioning	●	●	–	–
Dual-zone climate control	–	–	●	●
Dust and pollen filter	●	●	–	–
Aircare filter	–	–	●	●
Electric front and rear windows	●	●	●	●
Windshield wiper intermittent control with light/rain sensor	●	●	●	●
SEAT drive profile:				
- Four different models (Normal-Sport-Eco-Individual)				
- Steering response	–	–	●	●
- Throttle response				
- Gear shifts mode (DSG models only)				

● Standard ○ Optional – Not available



	SE	SE Technology	FR First Edition	FR Sport
Safety and security				
Safe and Driving Pack (S)				
Consisting of:				
- Attention and Drowsiness Assist (ADA)				
- Windshield wiper intermittent control with light sensor				
- Electronic Stability Control (ESC)				
- Extended and proactive pedestrian and cyclist protection	●	●	●	●
- Lane Assist				
- Front Assist (forward collision warning) and Autonomous Emergency Braking (AEB)				
- Dynamic road sign display				
- Rear parking sensors				
- Park distance control				
- Multifunction camera				
Anti-theft alarm (perimeter and interior monitoring) with backup horn and towing protection	●	●	●	●
Driver & Front passenger airbags	●	●	●	●
Side airbags in front with curtain airbag	●	●	●	●
Protective side molding	●	●	●	●
Electronic stability control (ESC)	●	●	●	●
Electronic engine immobiliser	●	●	●	●
ISOFIX points in outer rear seats with top tether anchorage points	●	●	●	●
Three-point seatbelts on all rear seats	●	●	●	●

● Standard ○ Optional – Not available

Equipment



	SE	SE Technology	FR First Edition	FR Sport
Safety and security				
Tyre pressure monitoring system	●	●	●	●
Tiredness recognition system	●	●	●	●
Hill hold control	●	●	●	●
Seat belt reminder for front and rear seats	●	●	●	●
Locking wheel bolts	●	●	●	●
Emergency Brake Assist (EBA) and front assist	●	●	●	●



● Standard ○ Optional – Not available

Option prices



	SE	SE Technology	FR First Edition	FR Sport	Basic price	VAT @ 20%	Recommended retail price
Wheels and tyres							
Space saver spare wheel (in lieu of standard tyre repair kit)	○	○	○	○	£166.67	£33.33	£200.00
Interior/Exterior equipment							
Body coloured roof	–	–	○	○	£0.00	£0.00	£0.00
Tow bar pre-installation	○	○	○	○	£166.67	£33.33	£200.00
Towing device (includes spare wheel)	○	○	○	○	£708.33	£141.67	£850.00
SEAT Premium Sound (premium speakers, subwoofer, 300W Amplifier)*	–	–	○	○	£458.33	£91.67	£550.00
KESSY (Keyless Entry and Go) with safelock	–	○	●	●	£270.83	£54.17	£325.00
Safety and security							
Safety and Driving Pack (M)							
Consisting of:							
- Adaptive Cruise Control	○	○	○	○	£229.17	£45.83	£275.00
- High Beam Assist							
- Forward collision warning including autonomous emergency braking, for adaptive cruise control “high”							
Safety and Driving Pack (XL)							
Consisting of:							
- Side and Exit Assist							
- Adaptive cruise control	–	–	○	○	£604.17	£120.83	£725.00
- Lane keeping system plus traffic jam assist							
- Forward collision warning incl. autonomous emergency braking, for adaptive cruise control							
- Automatic high beam control							

*Requires Space Saver Wheel at no cost.

● Standard ○ Optional – Not available

Connect your SEAT to your smartphone and boost your possibilities

Forgot where you parked?

Simply open the MySEAT app and you will be able to easily locate your vehicle in cities or large parking areas.

The GPS coordinates will give you the exact address, and you are then able to navigate to it through the easy to use map.

When is my service due?

You have enough things in your head to have to remember your next car service.

Activate automatic service scheduling and your chosen authorised service partner will contact you as soon as your vehicle detects the need of a service (inspection or relevant warning light).





Is my car secure?

For those moments when you're unsure if you've locked your car.

Through the MySEAT app, authorised users can see and control the lock status of the doors and boot.

Is my software up to date?

Just like your mobile phone, your SEAT also requires regular software updates.

You will be notified of any Over-the-Air updates (OTA) when they become available. These updates ensure that your SEAT's software remains up to date and installs new features without the need to visit a workshop. Keeping your SEAT's software current guarantees an optimised driving experience.

Be connected to your SEAT.

Just download the MySEAT App and follow the simple steps on this video, available by scanning the QR code. You will need to create an account with your personal data and introduce the chassis number of your car which can be found on the left part of the windscreen.

Notes: Some features may vary depending on the vehicle's configuration and equipment.

If you have any questions, call us free of charge at **0080 04000 2020** or write to us at **seatdigitalsupport@seat.es** or **seat-id.support@seat.es**

Enrol your SEAT to CONNECT



Download MySEAT App

Play Store



Apple Store



SEAT CONNECT



SEAT CONNECT's innovative services and functions connect you with your SEAT and the world around you.

With the CONNECT services, you can drive with greater peace of mind and comfort. Download the MySEAT app to connect your phone to your SEAT, providing easy access to essential driving data and vehicle information. For example, you can verify if your car's doors are locked from any location or find the exact spot where you parked your SEAT.

Online traffic information ensures you receive up-to-date traffic conditions, keeping you informed and ensuring you avoid traffic delays and take the most optimum route wherever possible. By pressing the breakdown call button in the car, or via the phone screen in the infotainment system, the most important information is shared with Roadside Assistance, such as your GPS coordinates and vehicle data, such as warning lights.

SEAT CONNECT ensures you always receive the latest updates to your infotainment system. The updates are done over-the-air, so this ensures you always obtain the latest improved features with no need for a workshop visit.



SEAT CONNECT

Standard SEAT CONNECT enables access to multiple features and benefits including:

Vehicle Status

- Driving data
- Vehicle health report

Streaming

- Internet Radio

Comfort

- Parking position
- Personalisation

Safe and Secure

- Service scheduling
- Customer care
- Breakdown call

Remote and Control

- Anti-theft alert
- Remote lock and unlock
- Remote Ventilation*

Navigation

- Online POI search
- Online destination import
- Online route import
- Online maps update

ONLINE NAVIGATION SERVICES:

- Online traffic information
- Local hazard information
- Online route calculation
- Dynamic POIs (Petrol + charging + parking information)

*Functionality only available for Leon and Ateca.
Please note: The availability of SEAT CONNECT services may vary depending on your vehicle and vehicle equipment.

Warranties, service plans and insurance



Extended warranties		All trims	Basic price	VAT @ 20%	Recommended retail price
When you buy a new SEAT it is covered by a three-year/60,000 miles manufacturer warranty. You can extend this cover, with a four-year/75,000 miles or five-year/90,000 miles SEAT Extended Manufacturer Warranty, and get the same level of cover. It is fully transferable to a new owner if you decided to sell your SEAT. Please note: The SEAT Extended Manufacturer Warranty is only available at the time of ordering a new SEAT.	Four-year/75,000 miles	<input type="radio"/>	£166.67	£33.33	£200.00
	Five-year/90,000 miles	<input type="radio"/>	£287.50	£57.50	£345.00
Extended Warranty for existing owners: If your existing warranty is about to expire, or if you haven't already got one in place, our Extended Warranty* is designed to protect you. For a quote, visit insurewithseat.co.uk					

*SEAT Financial Services is a trading name of Volkswagen Financial Services (UK) Limited. SEAT Extended Warranty is sold and administered by Lawshield UK Limited and underwritten by AWP P&C SA. Terms, conditions, and eligibility criteria apply.

Service plan		All trims	Upfront payment	or	Monthly cost
New Fixed Price Service Plans are available for cars up to 12 months. You always know where you are with our fixed price plans which are inflation proof. Available at participating SEAT Retailers. Go to seat.co.uk/bookservice Prices are subject to change and age of vehicle.	• For cars aged from 0-30 days	<input type="radio"/>	£299.00		24 monthly payments from £12.46
	• For cars aged from 31 days up to 12 months	<input type="radio"/>	£528.00		24 monthly payments from £22.00

☐ Optional

The SEAT Warranty

Three-year Warranty

All new SEAT's registered in the UK come with a three year/60,000 miles warranty, which protects your car against the failure of most mechanical and electrical components due to manufacturing defects. This comprises a two-year manufacturer's warranty with unlimited mileage plus a further one-year/60,000 (whichever is soonest).

Retailer Warranty

Should the mileage exceed 60,000 miles within the first two years, the manufacturer's two-year warranty will still be valid. If an additional warranty for subsequent years or higher mileage is desired, it may be purchased from an authorised SEAT Retailer or repairer, however, this additional warranty must be purchased before the mileage reaches 60,000. Cover is subject to the car being serviced and maintained according to the manufacturer's technical guidelines. Full details of the three-year warranty are available from your SEAT Retailer or Authorised Repairer.

Warranties, service plans and insurance



SEAT Extended Manufacturer Warranty

If you take out a SEAT Extended Manufacturer Warranty before your new car is registered, you'll get exactly the same level of cover as the three year warranty, but for up to five years. You can choose a SEAT Extended Manufacturer Warranty to last until the end of the 4th year/up to 75,000 miles or until the end of the 5th year/up to 90,000 miles (whichever is soonest). Please note: SEAT Extended Manufacturer Warranty products are only available at the time of ordering your new SEAT.

Three-year Paint Warranty

The paintwork of all models featured in this price list is covered against manufacturing defects for a period of three years. Naturally, the vehicle must be cared for in compliance with the operating instructions which will be found in your vehicle handbook. Please consult your Authorised Repairer for full warranty details.

12-year Body Protection Warranty

The internal body sections and panels of the models featured in this price list are covered against rusting through from the outside for twelve years. Naturally, the vehicle must be cared for in compliance with the operating instructions which will be found in your vehicle handbook. Please consult your Authorised Repairer for full warranty details.

SEAT Parts Warranty

SEAT parts and accessories supplied after new vehicle delivery are covered by our 24-month parts warranty.

SEAT Car Insurance

Complimentary Drive Away cover*

Every new and Approved Used SEAT comes with five days' complimentary insurance cover, getting you on the road quickly and easily so you can simply enjoy the drive. SEAT Drive Away Insurance is designed specifically for your SEAT and guarantees that your car will be repaired in a Authorised Repairer. Speak to your SEAT Retailer for more details.

Subject to eligibility.

We will also provide you with an annual quote, with no additional questions asked, so you can continue to enjoy all the benefits SEAT Car Insurance offers.

Annual Car Insurance*

SEAT Car Insurance offers quality service and support when you need it most, with a policy tailored specifically for your SEAT. Just as you'd expect from SEAT, our annual car insurance provides comprehensive cover, with lots of benefits included at no extra cost.

Insure your car with SEAT and relax knowing we only use SEAT trained technicians, who know your car inside out, and SEAT genuine parts[†], giving you the peace of mind that your SEAT will be repaired to the same high standards as before and to original manufacturer specifications.

[†]Excludes windscreen claims.

Get a quote or find out more at **insurewithseat.co.uk/car-insurance**
Alternatively, call us on **0345 877 6555**.
Lines are open 8am-8pm Monday to Friday
and 9am-5pm Saturday.

SEAT Car Insurance is arranged, underwritten and administered by Liverpool Victoria Insurance Company Limited, which is an Allianz Group company, registered in England and Wales company number 3232514. Authorised by the Prudential Regulation Authority and regulated by the Financial Conduct Authority and the Prudential Regulation Authority, Firm Reference Number 202965. Registered Office Address: 57 Ladymead, Guildford, Surrey, GU1 1DB

SEAT Car Insurance is a trading name of Liverpool Victoria Insurance Company Limited.

Volkswagen Financial Services Limited (VWFS UK) acts as an introducer to Liverpool Victoria Insurance Company Limited in respect of SEAT Car Insurance, registered in England and Wales Company Number 2835230 (Registered Office Address: Brunswick Court, Yeomans Drive, Blakelands, Milton Keynes MK14 5LR). VWFS UK is authorised and regulated by the Financial Conduct Authority, registration number 311988. Authorisation details for both organisations can be checked on the Financial Services Register by visiting **<https://www.fca.org.uk/firms/financial-services-register>**

Volkswagen Financial Services Limited UK and Liverpool Victoria Insurance Company Limited are not part of the same corporate group.

Warranties, service plans and insurance



SEAT Gap Insurance

If your SEAT is written off, your motor insurer will usually pay out based on the current market value of your vehicle. This could be a lot less than its original value and therefore may leave you with an unexpected shortfall. Our Gap Insurance helps to cover the gap left by this shortfall to get you back in a new SEAT or help pay off any outstanding finance, lease or hire agreement. SEAT Gap Insurance can be purchased up to 100 days after you have collected your new or used vehicle.

For more information, visit insurewithseat.co.uk/gap-insurance or visit your local participating SEAT Retailer.

SEAT Gap Insurance is administered by Car Care Plan Limited and underwritten by Motors Insurance Company Limited.

Eight-year PHEV Battery Warranty

A guarantee for eight years or 100,000 miles (whichever comes first). Gradual reduction in battery capacity over time is integral to the nature of the component, and does not represent a defect under the terms of this guarantee.

SEAT Roadside Assistance (including European cover)

Any new SEAT purchased and registered in the UK from an authorised SEAT Retailer, is covered free by SEAT Assistance (including European cover) for roadside repairs or recovery to an authorised repairer for a term of one year. Terms and conditions apply.

Specifications

Specifications refer to Model Year 2026. While SEAT makes every effort to make sure that specifications are accurate at the time of publication (12/2025), you should always check details with your SEAT Retailer as there may have been changes in view of SEAT's policy of continuous product improvement. The right is reserved to change specification and colour at any time. The information in this price list can therefore be given as guidance only.



SEAT Car Insurance is arranged, underwritten and administered by Liverpool Victoria Insurance Company Limited, which is an Allianz Group company, registered in England and Wales company number 3232514. Authorised by the Prudential Regulation Authority and regulated by the Financial Conduct Authority and the Prudential Regulation Authority, Firm Reference Number 202965. Registered Office Address: 57 Ladymead, Guildford, Surrey, GU1 1DB

SEAT Car Insurance is a trading name of Liverpool Victoria Insurance Company Limited.

Volkswagen Financial Services Limited (VWFS UK) acts as an introducer to Liverpool Victoria Insurance Company Limited in respect of SEAT Car Insurance, registered in England and Wales Company Number 2835230 (Registered Office Address: Brunswick Court, Yeomans Drive, Blakelands, Milton Keynes MK14 5LR). VWFS UK is authorised and regulated by the Financial Conduct Authority, registration number 311988. Authorisation details for both organisations can be checked on the Financial Services Register by visiting <https://www.fca.org.uk/firms/financial-services-register>

Volkswagen Financial Services Limited UK and Liverpool Victoria Insurance Company Limited are not part of the same corporate group.



Vehicle excise duty



All new vehicles are subject to a form of Vehicle Excise Duty (VED) based on the type of fuel the vehicle uses and its carbon dioxide (CO₂) emission level, measured in grammes per kilometre (g/km). The table below illustrates the duty you will pay based on the DVLA bandings.

12-month Road Fund Licence (RFL) rate for petrol and diesel cars:
Cars registered on or after 1 April 2025

CO ₂ g/km	1st Year Rate Petrol / Diesel / Alternative Fuel Vehicles (AFV)
0	£10
1	£110
51	£130
76	£270
91	£350
101	£390
111	£440
131	£540
151	£1,360
171	£2,190
191	£3,300
226	£4,680
256	£5,490

The standard rate for Petrol, Diesel and Alternative Fuel Vehicles is £195. Please be aware vehicles with a list price (RRP), including options, higher than £40,000 will incur an additional £425 a year in vehicle tax, from the second time the vehicle is taxed. For full details please refer to gov.uk/vehicle-tax-rate-tables

Benefit in kind tax

How to calculate your liability

The BIK percentage value is based on the CO₂ emissions of the vehicle for the current tax year 2025/26.

BIK calculation example: Arona SE 1.0 TSI 95PS

P11D value (OTR price less RFL and first registration fee)	£22,610.00
WLTP CO ₂ emissions (g/km)	120
Company car BIK tax based on CO ₂ emission level	30%
Taxable BIK (for 2025/26 tax year): 30% of £22,610.00	£6,783.00
Annual company car tax 2025/26 (@20% Income Tax)	
20% of £6,783.00	£1,356.60 per annum
Monthly company car tax 2025/26 (@20% Income Tax)	
£1,356.10 divided by 12	£ 113.05 per month



Technical data



	1.0 TSI 95PS	1.0 TSI 115PS	1.0 TSI DSG-auto 115PS	1.5 TSI DSG-auto 150PS
Engine	[SE, SE Technology]	[FR First Edition, FR Sport]	[SE, SE Technology, FR First Editon, FR Sport]	[FR First Edition, FR Sport]
Type [cylinders/valves per cylinder]	3/4	3/4	3/4	4/4
Displacement [cc]	999	999	999	1498
Bore and stroke [mm]	74.5 x 76.4	74.5 x 76.4	74.5 x 76.4	74.5 x 85.9
Compression ratio	11.5	11.5	11.5	12.0
Maximum power [PS/kW/rpm] ¹	70 [95]/5000-5500	85 [115]/5500	85 [115]/5500	110 [150]/5000-6000
Maximum torque [Nm/lb.ft/rpm]	175/1600-3500	200/2000-3000	200/2000-3500	250/1500-3500
Fuel supply system	TSI Direct Injection	TSI Direct Injection	TSI Direct Injection	TSI Direct Injection
Fuel type	Unleaded petrol	Unleaded petrol	Unleaded petrol	Unleaded petrol
Emission control	RDE 2	RDE 2	RDE 2	RDE 2
Start/stop system	Yes	Yes	Yes	Yes
Performance				
Maximum speed [km/h]	182	195	195	212
Maximum speed [mph] ²	113	121	121	132
Acceleration 0-62mph [s]	11.1	9.9	9.9	8.3

1. The maximum power output figures are quoted in PS (or Pferdestärke, which is the metric equivalent of horsepower). To convert from metric to imperial horsepower, divide the PS by 1.0139.
2. Where law permits.

Technical data



	1.0 TSI 95PS	1.0 TSI 115PS	1.0 TSI DSG-auto 115PS	1.5 TSI DSG-auto 150PS
WLTP - CO ₂ Combined WLTP range (g/km)	[SE, SE Technology]	[FR First Edition, FR Sport]	[SE, SE Technology, FR First Editon, FR Sport]	[FR First Edition, FR Sport]
SE	120-132	–	126 - 139	–
SE Technology	120-132	–	126 - 139	–
FR First Edition	–	121 - 132	127 - 139	129 - 136
FR Sport	–	125 - 132	130 - 139	132 - 136
WLTP ³ – Fuel Consumption Combined WLTP range (MPG)				
SE	47.9-53.3	–	47.9-51.4	–
SE Technology	47.9-53.3	–	47.9-51.4	–
FR First Edition	–	48.7-53.3	47.9-50.4	47.1-50.4
FR Sport	–	48.7-51.4	47.9-49.6	47.1-48.7
Transmission				
Gearbox type	5-speed manual	6-speed manual	7-speed automatic	7-speed automatic
Chassis				
Front suspension	Independent type McPherson – coil springs – hydraulic shock absorber [Variable shock absorber settings (switchable shock absorber)]			
Rear suspension	Semirigid axle, coil springs and hydraulic shock absorber [Variable shock absorber settings (switchable shock absorber)]			
Steering system	C-EPS (Column Electric Power System)			
Turning circle diameter [wall to wall] (m)	10.6			

3. Figures shown are for comparability purposes; only compare fuel consumption and CO₂ figures with other vehicles tested to the same technical procedures. These figures may not reflect real life driving results, which will depend upon a number of factors including the accessories fitted (post-registration), variations in weather, driving styles and vehicle load. Data correct at 12/2025. Figures quoted are for a range of configurations and are subject to change due to ongoing approvals/changes.

Technical data



	1.0 TSI 95PS	1.0 TSI 115PS	1.0 TSI DSG-auto 115PS	1.5 TSI DSG-auto 150PS
Braking system	[SE, SE Technology]	[FR First Edition, FR Sport]	[SE, SE Technology, FR First Edition, FR Sport]	[FR First Edition, FR Sport]
Anti-lock Braking System (ABS)				
Type (front/rear)	Ventilated front brakes/ Drum-disc brakes in rear axle		Ventilated front brakes/Disc brakes in rear axle	
Front discs (mm)	276 x 24	276 x 24	276 x 24	276 x 24
Rear discs (mm)	228 x 42	230 x 9	230 x 9	230 x 9
Weights				
Kerb weight [with driver] (kg)	1188	1213	1231	1268
Permissible gross weight (kg)	1710	1720	1750	1770
Max. towing weight without brake (kg)	590	600	610	630
Max. towing weight with brake 12% (kg)	1000	1100	1100	1200
Dimensions				
Boot capacity (l)			400	
Fuel tank capacity (l)			40	



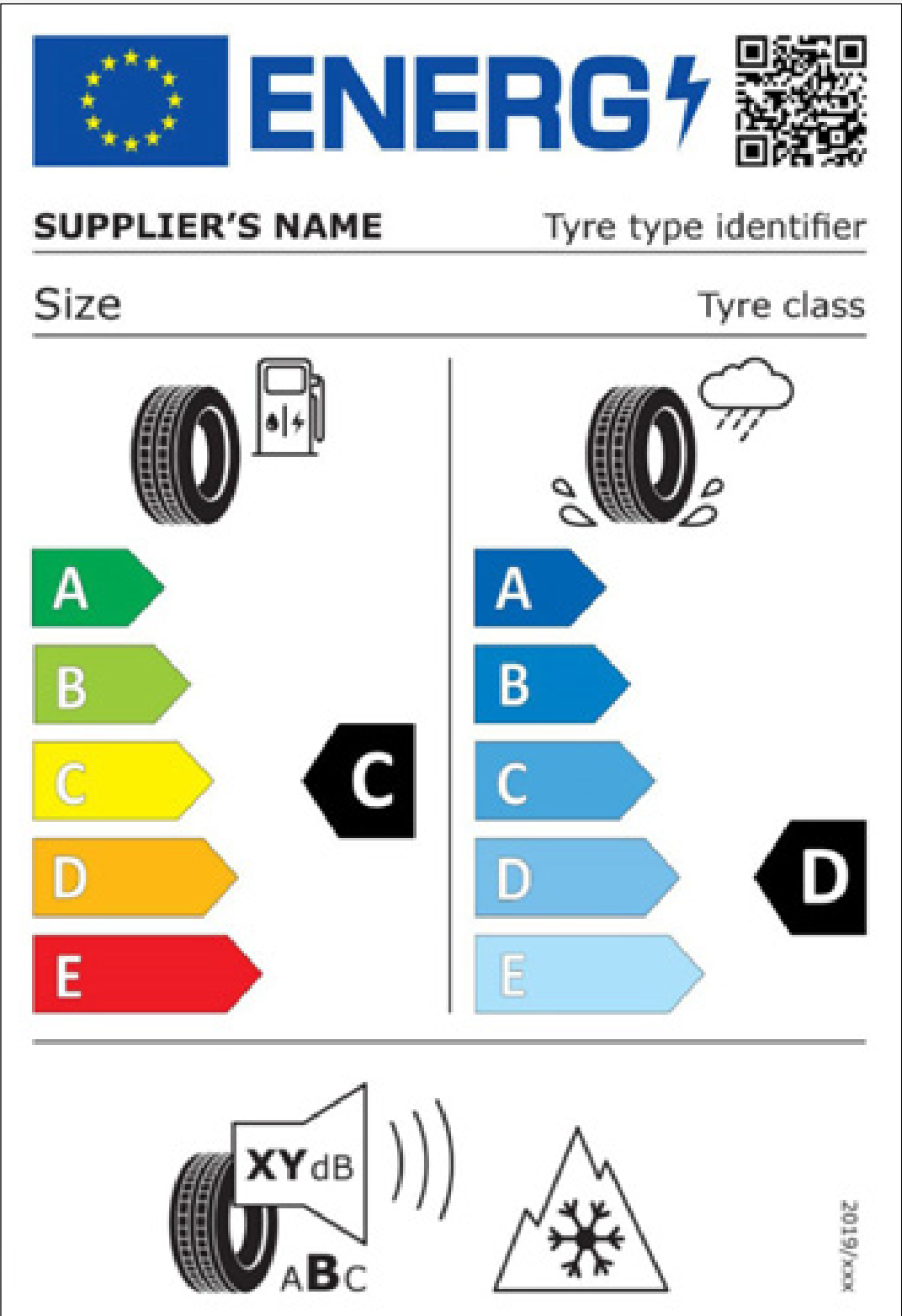
Your tyre label



They may not be the first part of your SEAT you notice, but your tyres play a vital role in keeping you on the road. Your EU tyre label tells you everything you need to know.

You'll see detailed information on your tyres and their technical specifications on the SEAT online car configurator. Click [here](#) to start building your SEAT now.

Due to the variation of tyres that may be fitted during production, the configurator will show multiple tyre labels. It is not possible to select a specific tyre when ordering a vehicle.



Fuel efficiency

This is a measure of 'rolling resistance' – in other words, the amount of energy lost through motion. The lower the rolling resistance, the lower your fuel consumption, with tyres rated as Class-A being the most efficient.

Wet grip

Rigorous testing ensures your tyres give great handling and performance in all conditions. Wet grip specifically measures how well you can brake in wet conditions, with Grade-A giving the shortest stopping distance.

External noise

Tyres are carefully measured so you know exactly how much noise they'll make while driving. If decibels don't mean a lot to you, don't worry. Each tyre also falls into a noise Class-A being the quietest and C the loudest.



SEAT is committed to a policy of continuous product development and reserves the right to make changes to specifications, colours and prices without notice. The information in this brochure can therefore be given as guidance only. While SEAT makes every effort to ensure that specifications are accurate at the time of publication, you should always check with your authorised SEAT Partner for the latest information. Due to limitations of the printing process the colours reproduced in this brochure may vary slightly from the actual paint colour and material. This vehicle and all its parts, as well as the original spares, were designed according to the Legal Regulations governing the prevention and minimisation of Environmental Impact, through the use of recycled/recyclable materials, with measures taken to achieve suitable recycling for the conservation and improvement of environmental quality.

Published in the UK, December, 2025.