

KODIAQ



ŠKODA



Effective: 1st April 2022

HORIZONS BROADENED

Exploration begins at home...
Or rather, on the driveway.

The robust and spacious ŠKODA KODIAQ is eager to turn every family drive into a voyage of discovery.

KODIAQ makes its intentions clear from the very start, with striking design details, ensuring you'll be driving an SUV that looks fantastic and performs just as well.

Bolstered by protective assets all round, such as wheel arch covers and reinforced front and rear bumpers, along with the stunning LED Matrix headlights, an array of features is on hand to keep you safe on every adventure.

KODIAQ caters for larger families with the availability of seven seats. The even more adventurous can tackle any terrain with the optional 4x4 drive.



Models shown are not UK specification.

DESIGNED TO MAKE A STATEMENT

The KODIAQ isn't just a car built to take on the toughest terrains with ease. Its tornado lines, precise edges and crystalline influences add to its distinguished style.



FULL LED MATRIX HEADLIGHTS

This adaptive system provides different lighting modes for various situations and weather conditions, such as driving in the city, on the motorway, in the rain or fog.



REAR LED LIGHTS (HIGH FUNCTIONALITY)

The tail lights are eye-catching with their crystalline structures and form the ŠKODA-typical C-shaped light cluster. They are standard across the range, equipped with dynamic indicators and an animated welcome effect.



PANORAMIC SUNROOF

This electrically adjustable panoramic sunroof and blind provides extra sunlight and fresh air at the simple touch of a button.



WHEELS

Ranging from 18" to 20", a choice of alloy wheel options are available, giving you the opportunity to uniquely personalise the KODIAQ's distinctive exterior.

Models shown are not UK specification. Some of the equipment shown is optional.

FIRST-CLASS TRAVEL FOR UP TO SEVEN PASSENGERS

With many clever features designed to make your life just a little easier, the only thing not packed into the KODIAQ's stylish interior are your passengers.



Models shown are not UK specification. Some of the equipment shown is optional.

TRI-ZONE CLIMATE CONTROL

Part of the Winter pack – heated front and rear seats, this intelligent system enables different temperatures to be set for the driver, co-driver and rear passengers.



PERSONALISATION OPTIONS

The infotainment system enables different drivers to save their individual preferences, from seat positioning and driving mode to ambient light settings.



LED INTERIOR LIGHT PACK

Selecting the KODIAQ's LED ambient lighting is anything but a black and white decision. From the understated to the unapologetically bold, ten colour options are available.



FRONT-RUNNER

The radically different look to KODIAQ is at it's most striking when viewed head-on. A newly designed bonnet, grille, headlights and bumper with spoiler underline a confident expression, setting the tone as you get on your way.



Models shown are not UK specification. Some of the equipment shown is optional.

FUEL-EFFICIENT ENGINES

Whether you favour petrol or diesel, you'll find a clever engine to suit.



DYNAMIC CHASSIS CONTROL

This feature lets you switch between six driving modes, giving you added comfort, power or grip, depending on the terrain.



FOUR-WHEEL DRIVE

The 4x4 system is designed to smoothly distribute the torque between front and rear axles automatically, to help you maintain control and stability.



DIRECT SHIFT GEARBOX (DSG)

DSG automatically adapts to your driving style, whilst taking road conditions into account. It reduces the strain on the engine and stress to the driver, by deciding when to change gear, leaving you free to concentrate on the journey.



CONNECTIVITY TO GO WHEREVER YOU GO

By enabling you to be fully online on the move, the KODIAQ helps you stay connected wherever your adventure takes you. Thanks to its smart assistance systems, you'll also know the best places to park, shortcuts to take and routes to avoid.



ŠKODA CONNECT & NAVIGATION SYSTEM

The new ŠKODA Connect system turns the KODIAQ into a fully interconnected car. Infotainment Online provides satellite navigation, traffic reports and calendar updates. With Proactive Services the car will contact your ŠKODA Retailer to arrange a service. Finally, Emergency Call will contact the emergency services in the event of an accident to get you the help you need.

The Columbus satellite navigation with 9.2" touchscreen display and integrated Wi-Fi will get you from A to B, but why stop there? With its Bluetooth®, SmartLink and Wi-Fi capability, it offers more connectivity on-the-go.

[Click here to go to ŠKODA Connect.](#)



SMARTLINK

SmartLink enables you to connect your smartphone through the infotainment system with Apple CarPlay™ and Android Auto™ as standard across the range.

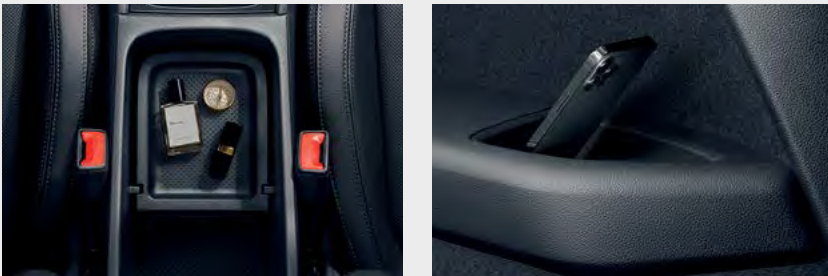


VIRTUAL COCKPIT
Put all the information you need right in front of your eyes with the customisable 10.25" digital display. It replaces the traditional instrument dials and can be customised with four views (Classic, Basic, Extended and Modern). A fifth Sports view is available for SportLine models.

Images shown may not be UK specification. Some of the equipment shown is optional.

AN INTERIOR FOR LOVERS OF WIDE OPEN SPACE

There’s always room for more toys, more snacks and the occasional four-legged friend. After all, life’s too short to let anything ever get in the way of quality family time away. Especially a lack of space.



JUMBO BOX
Equipped with cup holders and handy storage compartments, the Jumbo Box will store your gadgets, house keys and books.



SPACIOUS STORAGE
Several spacious storage compartments have been included in the interior to help you keep it looking its best. Some can also be air-conditioned, making it perfect for storing chilled refreshments.



MORE ROOM TO PLEASE

With one of the best luggage capacities in its class, you no longer need to compromise on what you pack. With the rear seats folded (five seat versions), there’s a remarkable 2,065 litres of space available. That means ample room for everything that’s important to you. The remote release button makes folding the rear seats easy.

Models shown are not UK specification.



CLEVER DESIGN WITH A HUMAN TOUCH

At ŠKODA we believe the best ideas are those that make our lives simpler. That's why the KODIAQ is full of practical touches to ensure every trip is easy.

DOOR EDGE PROTECTION

Part of Family pack, all side doors can be fitted with plastic strips that eject upon opening and cover the edge of the door. Ideal when you're in a tight parking spot.

Models shown are not UK specification. Some of the equipment shown is optional.

UMBRELLA STORAGE

A spot of rain will never dampen your spirits again thanks to the umbrella located in the front door.



FUEL DOOR

With fuel-fill protection, you'll never load up with the wrong fuel again. You'll also find a handy ice scraper on the fuel door for those frosty mornings.



VIRTUAL PEDAL

On-hand when none of yours are free. Simply use a 'kick motion' underneath the luggage compartment to open the boot.



ALWAYS LOOKING OUT FOR YOUR SAFETY



ON THE LOOKOUT

With a host of camera and radar-based assistance systems making continual assessments, you'll have peace of mind - wherever you're driving.

PEDESTRIAN MONITOR

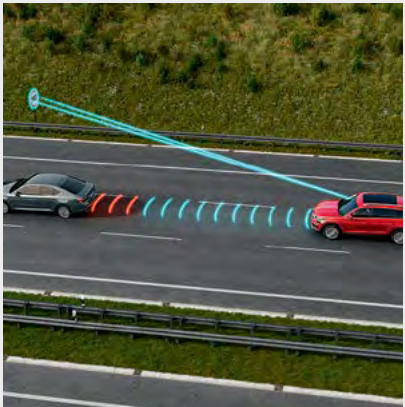
Whether it's a child chasing a loose ball or an adult glued to their smartphone screen, if someone unexpectedly crosses your path the Pedestrian Monitor automatically reduces your car's speed to help prevent a collision.

MULTI-COLLISION BRAKE

In the unthinkable event you have an accident in your KODIAQ, the Multi-Collision Brake system will automatically slow the car to help protect you from any further collisions.

TRAVEL ASSIST

The onboard camera recognises and displays key traffic signs on the colour multifunction trip computer or virtual cockpit and navigation system, helping you to be safer behind the wheel. Also features adaptive lane assist, predictive adaptive cruise control and traffic jam assist.



BLIND SPOT DETECT

An extra set of eyes on the road that monitors the blind spots allowing you to manoeuvre safely.



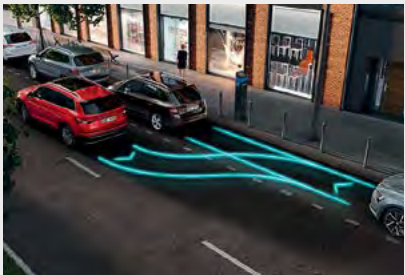
FULL LED MATRIX HEADLIGHTS

See more of the road ahead with the adaptive front light system, cornering function, all weather lighting system and integrated headlight washers



PARK ASSIST

This function removes the stress of reverse and parallel parking by identifying if the parking spot is big enough before automatically steering into the space for you.



Images shown may not be UK specification. Some of the equipment shown is optional.

KODIAQ RANGE

SE DRIVE



SPORTLINE



SE L EXECUTIVE



L&K



vRS



Images displayed may not be UK specification and may contain optional equipment.

KODIAQ SE DRIVE

Thanks to the impressive infotainment system and comfort-enhancing features, your passengers will be kept amused and refreshed on even the longest adventure.



REAR LED LIGHTS (HIGH FUNCTIONALITY) WITH WELCOME EFFECT AND DYNAMIC INDICATORS



LED HEADLIGHTS (LOW FUNCTIONALITY) WITH DAYTIME RUNNING LIGHTS



PRIVACY GLASS

STANDARD EQUIPMENT: SE DRIVE

WHEELS

> 18" ASCELLA ANTHRACITE ALLOY WHEELS

EXTERIOR

> REAR LED LIGHTS (HIGH FUNCTIONALITY) WITH WELCOME EFFECT AND DYNAMIC INDICATORS

> EXTENDED REAR SPOILER WITH FINLETS IN GLOSS BLACK

> ELECTRICALLY ADJUSTABLE, HEATED AND FOLDING DOOR MIRRORS WITH INTEGRATED INDICATORS

> OFF-ROAD STYLE LOWER FRONT BUMPER ELEMENT

INTERIOR

> FABRIC UPHOLSTERY

> TWO-SPOKE LEATHER MULTI-FUNCTION STEERING WHEEL

ENTERTAINMENT AND COMMUNICATION

> AMUNDSEN SATELLITE NAVIGATION WITH 8" TOUCHSCREEN DISPLAY AND INTEGRATED WI-FI

> SMARTLINK (WIRELESS FOR APPLE AND WIRED FOR ANDROID)

> INFOTAINMENT ONLINE (1 YEAR)

COMFORT AND CONVENIENCE

> CRUISE CONTROL

> DUAL-ZONE CLIMATE CONTROL WITH HUMIDITY SENSOR AND CONTROL

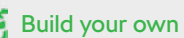
> REAR-VIEW PARKING CAMERA

> FRONT AND REAR PARKING SENSORS

> RAIN AND LIGHT SENSORS

> AUTO-DIMMING REAR VIEW MIRROR

Models shown are not UK specification.
Information regarding tyre technical specifications can be found by visiting the ŠKODA car configurator [here](#).



A detailed view of the front interior of a Volvo SUV. The image shows the driver's side and front passenger seat, both upholstered in black leather with white stitching. The dashboard is a wide, horizontal panel with a large central display screen. The steering wheel is black with the Volvo logo in the center. The interior is well-lit, and the view through the windshield shows a forested area.

A close-up view of the center console of a 2015 Ford Focus. The climate control system features three rotary dials: the left dial is set to 20.0°C, the middle dial is set to 'MENU', and the right dial is set to 'AUTO'. Above the dials are six buttons for various functions: fan speed, air recirculation, defrost, defog, air conditioning, and a lock icon. Below the dials are four buttons: 'OFF', 'P', 'P', and 'PASSenger AIRBAG'. The 'P' buttons are likely for parking brake or power windows. The 'PASSenger AIRBAG' button is a safety feature that can be disabled if the passenger seat is empty.

A close-up photograph of the side mirror and front door of a silver car. The mirror is black with a silver base. The car's body is a metallic silver color. The background is a blurred natural setting.

Introduction	Design & drivetrain	Connectivity	Comfort & convenience	Driver's assistance	Standard equipment	Model prices	Optional equipment	Accessories	Paint options	VED (Vehicle Excise Duty)	Technical specification	Additional information
--------------	---------------------	--------------	-----------------------	---------------------	--------------------	--------------	--------------------	-------------	---------------	---------------------------	-------------------------	------------------------



KODIAQ SE L EXECUTIVE

With an impressive amount of standard equipment, the KODIAQ SE L and SE L Executive is the perfect blend of practicality and specification.



ELECTRICALLY OPERATED BOOT AS STANDARD, WITH OPTIONAL VIRTUAL PEDAL



REAR-VIEW PARKING CAMERA WITH FRONT AND REAR PARKING SENSORS



FULL LED MATRIX HEADLIGHTS WITH AFS (ADAPTIVE FRONT LIGHT SYSTEM), CORNERING FUNCTION AND AWL (ALL WEATHER LIGHTING SYSTEM)

STANDARD EQUIPMENT: SE L EXECUTIVE (OVER SE DRIVE)

WHEELS

> 19" CURSA ANTHRACITE ALLOY WHEELS

EXTERIOR

> CHROME STYLING INCLUDING FRONT GRILLE AND WINDOW SURROUNDS

> CHROME ROOF RAILS

> ELECTRICALLY ADJUSTABLE, HEATED, FOLDABLE AND DRIVER-SIDE AUTO-DIMMING DOOR MIRRORS WITH BOARDING SPOTS AND MEMORY FUNCTION

INTERIOR

> LINEAR DIAMONDS DECORATIVE INSERTS

> LEATHER UPHOLSTERY

> HEATED FRONT SEATS

> SEVEN SEATS

> ELECTRICALLY ADJUSTABLE DRIVERS SEAT WITH MEMORY FUNCTION

ENTERTAINMENT AND COMMUNICATION

> DRIVE MODE SELECT

COMFORT AND CONVENIENCE

> ELECTRICALLY OPERATED BOOT

> DECORATIVE DOOR SILLS IN THE FRONT

> DRAWERS UNDER DRIVER AND FRONT PASSENGER SEATS

Models shown are not UK specification.
Information regarding tyre technical specifications can be found by visiting the ŠKODA car configurator [here](#).

KODIAQ SE L EXECUTIVE



BLACK LEATHER UPHOLSTERY WITH OPTIONAL ELECTRICALLY ADJUSTABLE FRONT SEATS WITH MEMORY FUNCTION.



WIRELESS CHARGING PAD



19" CURSA ANTHRACITE ALLOY WHEELS.

RECOMMENDED OPTIONS

> LEATHER UPHOLSTERY WITH VENTILATED FRONT SEATS AND MASSAGE FUNCTION

Includes electrically adjustable front seats with memory function, cushion depth adjustment, electrically adjustable lumbar support.

> PANORAMIC SUNROOF

Allows natural light to flood in, and looks great both inside and out.

> 19" PROCYON ALLOY WHEELS WITH ANTHRACITE AERO COVERS

Including anti-theft wheel bolts.

> WINTER PACK - HEATED FRONT SEATS

Includes heated front seats, heated steering wheel with paddles for DSG, heated windscreen and heated windscreen washer nozzles.

> LED INTERIOR LIGHT PACK WITH FRONT DOOR POCKET ILLUMINATION AND ŠKODA LOGO PROJECTION

Enhance the comfort to your interior with ambient lighting. Includes LED strips in the front and rear doors with a choice of 10 colours, LED footwell lighting and LED reading lights.

Models shown are not UK specification.
Information regarding tyre technical specifications can be found by visiting the ŠKODA car configurator [here](#).

KODIAQ SPORTLINE – SHARPER, SLEEKER, SPORTIER

The KODIAQ SportLine delivers refinement and exhilaration in equal part. Exterior features include the gloss black front grille, chrome exhaust pipe and elegant body painted side sills, while the car's sports credentials are further enhanced in the interior through carbon fibre finish detailing and Microsuede sports seating.



Models shown are not UK specification. Excludes drawers under driver and front passenger seats. Information regarding tyre technical specifications can be found by visiting the SKODA car configurator [here](#).

KODIAQ SPORTLINE



BLACK STYLING

The striking black radiator grille, door mirrors and roof railings give the SportLine's dynamic silhouette an edgier and sportier look.



SPORT STEERING WHEEL

The three-spoke leather sport multifunction steering wheel with silver stitching puts everything you need at your fingertips. DSG models also feature aluminium gearshift paddles.



LED INTERIOR LIGHT PACK

Selecting the KODIAQ's LED ambient lighting is anything but a black and white decision. From the understated to the unapologetically bold, 10 colour options are available.



ALLOY WHEELS

The 20" Vega anthracite alloy wheels further enhance the sportiness of the SportLine's exterior.



MICROSUEDE SPORTS SEATS

The black Microsuede Sports Seats sports seats with diamond stitching let you know that you're sitting in something special. The interior is finished with grey stitching on the seats, armrests, door panels and dashboard.

RECOMMENDED OPTIONS

- > PANORAMIC ROOF
Invite the outside world in with the electrically adjustable panoramic sunroof, which opens at the simple touch of a button.
- > WINTER PACK - HEATED FRONT SEATS
Includes heated front seats, heated steering wheel with paddles for DSG, heated windscreen and heated windscreen washer nozzles.
- > VIRTUAL COCKPIT
Put all the information you need right in front of your eyes with the customisable 10.25" digital display.
- > ELECTRICALLY ADJUSTABLE FRONT SEATS WITH MEMORY FUNCTION
Includes electrically adjustable lumbar support and electrically adjustable, heated, folding and driver side auto-dimming door mirrors with boarding spots and memory function.
- > PARK ASSIST
This function removes the stress of bay and parallel parking by identifying if the parking spot is big enough before automatically steering into the space. Includes front and rear sensors.

Models shown are not UK specification. Excludes drawers under driver and front passenger seats. Information regarding tyre technical specifications can be found by visiting the ŠKODA car configurator [here](#).

KODIAQ LAURIN & KLEMENT – THE ULTIMATE STATEMENT PIECE

The Laurin & Klement is our most prestigious KODIAQ model ever, celebrating our founders and showcasing the ultimate levels of luxury and high-end technologies that the KODIAQ has to offer.



Models shown are not UK specification. Some of the equipment shown is optional. Excludes drawers under driver and front passenger seats. Information regarding tyre technical specifications can be found by visiting the ŠKODA car configurator [here](#).

KODIAQ LAURIN & KLEMENT



EXTERIOR BADGING

An elegant reminder of ŠKODA's founders, the original Laurin & Klement badge appears on both front wings.



VIRTUAL COCKPIT

The 10.25" digital display replaces the traditional instrument display and can be customised with four views (Classic, Basic, Extended and Modern).



CANTON SOUND SYSTEM

Whether indulging in a spot of in-car karaoke or catching up on the news, the CANTON Sound System delivers 575 watts of powerful clarity from ten speakers around the car.



19" SIRIUS ANTHRACITE ALLOY WHEELS

Unique 19" Sirius alloy wheels in anthracite design allow you to conquer new ground in style.



LEATHER VENTILATED SEATS WITH LAURIN & KLEMENT LOGO

Another mark of exclusivity is featured on the beige leather seats, which feature an elegantly embroidered Laurin & Klement logo. The seats are also available in black leather.

RECOMMENDED OPTIONS

> 20" MEROPE ANTHRACITE ALLOY WHEELS
Including anti-theft wheel bolts.

> WINTER PACK - HEATED FRONT AND REAR SEATS
Includes tri-zone climate control which allows three autonomous thermal comfort zones to be set: driver, front passenger and rear passengers.

> TRAVEL ASSIST
Be in the know with traffic sign recognition and have a safe, relaxing drive with adaptive lane assist, predictive adaptive cruise control, traffic jam assist and emergency assist.

> VIRTUAL PEDAL
Simply swipe your foot underneath the luggage compartment to automatically open the door. We call this the Kick Activation (Virtual Pedal), which only works when it detects your keys are in range.

> DYNAMIC CHASSIS CONTROL (DCC) INCLUDING DRIVE MODE SELECT AND OFF-ROAD FUNCTION
Allows the driver to adapt the chassis properties to their preference or needs. The system is designed to continuously evaluate to various driving situations, adapting the damping and steering characteristics.

Models shown are not UK specification. Some of the equipment shown is optional. Excludes drawers under driver and front passenger seats. Information regarding tyre technical specifications can be found by visiting the ŠKODA car configurator [here](#).

KODIAQ vRS – FAMILY LIFE, TURBOCHARGED

Family life brings new responsibilities, KODIAQ vRS allows you to fulfil them with no limits.

Transform every chore into a dynamic experience with 4x4 drive, 20" alloy wheels and Dynamic Chassis Control, to name just a few of the features on offer.



Models shown are not UK specification. Some of the equipment shown is optional. Excludes drawers under driver and front passenger seats. Information regarding tyre technical specifications can be found by visiting the ŠKODA car configurator [here](#).

KODIAQ vRS



3-SPOKE LEATHER SPORTS MULTI-FUNCTION STEERING WHEEL WITH VRS LOGO AND PADDLES FOR DSG



VIRTUAL COCKPIT
The 10.25" digital display replaces the traditional instrument display and can be customised with five views (Classic, Basic, Extended, Modern and Sports).



vRS EXTERIOR DESIGN
vRS front and rear bumpers with vRS badging (gloss black on tailgate and chrome on radiator grille), and chrome exhaust tailpipes.



20" SAGITTARIUS ANTHRACITE ALLOY WHEELS WITH AERO COVERS



MICROSUEDE vRS SPORTS UPHOLSTERY WITH RED STITCHING AND VRS LOGO ON FRONT SEATS
The interior reflects the exceptional sporty charisma of the car while keeping you in maximum comfort. Finished in red stitching on the seats, armrests, dashboard and door panels.

RECOMMENDED OPTIONS

> PANORAMIC SUNROOF
Invite the outside world in with the electrically adjustable panoramic sunroof, which opens at the simple touch of a button.

> ELECTRICALLY ADJUSTABLE FRONT SEATS WITH MEMORY FUNCTION

> LEATHER UPHOLSTERY WITH VENTILATED FRONT SEATS
Includes electrically adjustable front seats with memory function, cushion depth adjustment and electrically adjustable lumbar support.

> TRAVEL ASSIST
Includes traffic sign recognition, adaptive lane assist, predictive adaptive cruise control and traffic jam assist. DSG engines also have emergency assist.

> WINTER PACK - HEATED FRONT AND REAR SEATS
Includes heated front and rear seats, heated steering wheel with paddles for DSG, tri-zone climate control, heated windscreen, and heated windscreen washer nozzles.

Models shown are not UK specification. Some of the equipment shown is optional. Excludes drawers under driver and front passenger seats. Information regarding tyre technical specifications can be found by visiting the ŠKODA car configurator [here](#).

ON THE ROAD AND P11D PRICING

KODIAQ SE DRIVE (5 seat)	VED Band	Insurance group (50)	Recommended Basic	VAT	RRP	Recommended OTR*	BiK 2022/23*	P11D value
1.5 TSI 150PS ACT**	I	18E	£25,291.67	£5,058.33	£30,350.00	£31,600.00	35%	£30,960.00
1.5 TSI 150PS DSG ACT	I	18E	£26,541.67	£5,308.33	£31,850.00	£33,100.00	36%	£32,460.00
2.0 TDI 150PS DSG SCR	H	20E	£28,429.17	£5,685.83	£34,115.00	£35,010.00	33%	£34,725.00
2.0 TDI 150PS DSG 4x4 SCR	I	20E	£29,854.17	£5,970.83	£35,825.00	£37,075.00	36%	£36,435.00
KODIAQ SE DRIVE (7 seat)								
1.5 TSI 150PS ACT**	I	18E	£26,179.17	£5,235.83	£31,415.00	£32,665.00	35%	£32,025.00
1.5 TSI 150PS DSG ACT	I	18E	£27,429.17	£5,485.83	£32,915.00	£34,165.00	36%	£33,525.00
2.0 TDI 150PS DSG SCR	H	20E	£29,316.67	£5,863.33	£35,180.00	£36,075.00	33%	£35,790.00
2.0 TDI 150PS DSG 4x4 SCR	I	21E	£30,741.67	£6,148.33	£36,890.00	£38,140.00	36%	£37,500.00
KODIAQ SE L EXECUTIVE (7 seat)								
1.5 TSI 150PS ACT**	I	19E	£28,508.33	£5,701.67	£34,210.00	£35,460.00	36%	£34,820.00
1.5 TSI 150PS DSG ACT	I	20E	£29,758.33	£5,951.67	£35,710.00	£36,960.00	37%	£36,320.00
2.0 TSI 190PS DSG 4x4	J	26E	£32,666.67	£6,533.33	£39,200.00	£40,810.00	37%	£39,810.00
2.0 TDI 150PS DSG SCR	H	21E	£31,645.83	£6,329.17	£37,975.00	£38,870.00	34%	£38,585.00
2.0 TDI 150PS DSG 4x4 SCR	I	22E	£33,070.83	£6,614.17	£39,685.00	£40,935.00	37%	£40,295.00
2.0 TDI 200PS DSG 4x4 SCR	J	27E	£34,062.50	£6,812.50	£40,875.00	£42,485.00	37%	£41,485.00
KODIAQ Sportline (7 seat)								
1.5 TSI 150PS DSG ACT	I	20E	£31,304.17	£6,260.83	£37,565.00	£38,815.00	37%	£38,175.00
2.0 TSI 190PS DSG 4x4	J	27E	£34,212.50	£6,842.50	£41,055.00	£42,665.00	37%	£41,665.00
2.0 TDI 150PS DSG 4x4 SCR	I	22E	£34,616.67	£6,923.33	£41,540.00	£42,790.00	37%	£42,150.00
2.0 TDI 200PS DSG 4x4 SCR	J	27E	£35,608.33	£7,121.67	£42,730.00	£44,340.00	37%	£43,340.00
KODIAQ L&K (7 seat)								
2.0 TSI 190PS DSG 4x4	J	27E	£35,783.33	£7,156.67	£42,940.00	£44,550.00	37%	£43,550.00
2.0 TDI 150PS DSG 4x4 SCR	I	22E	£36,187.50	£7,237.50	£43,425.00	£44,675.00	37%	£44,035.00
2.0 TDI 200PS DSG 4x4 SCR	J	27E	£37,179.17	£7,435.83	£44,615.00	£46,225.00	37%	£45,225.00
KODIAQ vRS (7 seat)								
2.0 TSI 245PS DSG 4x4	K	30E	£38,004.17	£7,600.83	£45,605.00	£47,690.00	37%	£46,215.00

Pricing valid as of 1st April 2022.

* The recommended 'on the road' prices and any VED charges quoted reflect the VED charges which apply to vehicles registered after 1 April 2022. Choice of wheels and other options may affect fuel consumption, BiK and emissions data (which may affect the amount of VED payable and therefore the ROTR price). The price and charges you pay may differ from any prices or charges displayed or quoted before 1 April 2022.

** Only available from stock.

From 6 April 2020, the official CO₂ emissions values used to calculate benefit in kind (BIK) charges for fleet channels will change for passenger car registrations in the UK. This is due to a change in the method of testing. The BIK charges quoted reflect the charges which apply to vehicles registered after 6 April 2020. These charges may differ from any charges displayed or quoted before 6 April 2020.

Information regarding tyre technical specifications can be found by visiting the ŠKODA car configurator [here](#).

WHEELS AND SUSPENSION

PAINT

EXTERIOR

INTERIOR

OPTIONAL EQUIPMENT – CONTINUED

INTERIOR - continued	SE Drive	SE L Executive	Sportline	L&K	vRS	Basic exc VAT	RRP inc VAT
Electrically adjustable front seats with memory function. Includes electrically adjustable lumbar support. This option removes the drawer under driver and front passenger seats.	-	○	○	●	○	£400.00	£480.00
Leather upholstery with ventilated front seats includes electrically adjustable front seats with memory function, cushion depth adjustment and electrically adjustable lumbar support. This option removes the drawer under the driver and front passenger seats.	-	-	○	-	○	£1,337.50	£1,605.00
Leather upholstery with ventilated front seats and massage function includes electrically adjustable front seats with memory function, cushion depth adjustment, electrically adjustable lumbar support. Only available with black upholstery. This option removes the drawer under driver and front passenger seats.	-	○	-	○	-	£645.83	£775.00
Drawers under driver and front passenger seats.	○	●	-	-	-	£45.83	£55.00
Folding tables on front seat backrests. Only available in combination with lumbar support on SE Drive.	○	○	-	-	-	£120.83	£145.00
Rear seat backrest release.	○	○	○	○	○	£83.33	£100.00
Partition net screen.	○	○	○	○	○	£145.83	£175.00
Waste bin in door panel.	○	○	○	○	○	£29.17	£35.00
Variable boot floor.	○	●	●	●	●	£141.67	£170.00
LED interior light pack with front door pocket illumination and ŠKODA logo projection. Includes LED strips in the front and rear doors with a choice of 10 colours, LED footwell lighting, LED reading lights and Linear diamonds decorative inserts for SE.	○	○	●	●	●	£237.50	£285.00
Textile floor mats. Not available in combination with Textile floor mats with lounge steps in rear.	○	●	●	●	●	£79.17	£95.00
Textile floor mats with lounge steps in rear (middle row for 7-seats). Not available in combination with Textile floor mats.	○	○	-	-	-	£195.83	£235.00
	-	-	○	○	○	£120.83	£145.00
Manual roller blinds for rear windows.	○	○	○	○	○	£183.33	£220.00
Smoker's Pack.	○	○	○	○	○	£37.50	£45.00
Family Pack includes door edge protection, manual roller blinds for rear side windows and bin in door panel.	○	○	○	○	○	£162.50	£195.00
Sleep Pack includes acoustic glass, special design rear-seat headrests, tinted rear windows, mechanical sun blind for side windows in the rear and textile floor mats with lounge steps in rear. Not available in combination with textile floor mats.	○	○	○	○	○	£291.67	£350.00
COMFORT AND CONVENIENCE							
Winter pack - heated front seats. Includes heated front seats, heated steering wheel with paddles for DSG, heated windscreen and heated windscreen washer nozzles. Heated front seats are standard on SE L Executive, SportLine and vRS.	○	-	-	-	-	£520.83	£625.00
		○	-	-	-	£433.33	£520.00
			○	●	○	£341.67	£410.00
Winter pack - heated front and rear seats. Includes heated front and rear seats, heated steering wheel with paddles for DSG, tri-zone climate control, heated windscreen, and heated windscreen washer nozzles. Heated front seats are standard on SE L Executive, SportLine and vRS	-	○	-	-	-	£641.67	£770.00
Heated front seats, heated steering wheel with paddles for DSG and heated windscreen are standard on L&K.	-	-	○	-	○	£579.17	£695.00
	-	-	-	○	-	£354.17	£425.00
Third key	○	○	○	○	○	£45.83	£55.00
Virtual Pedal. Enables touch-free boot opening via a motion sensor under the rear bumper. If the system identifies the authorised key and detects the 'kick' motion, the boot will open or close.	○	-	-	-	-	£575.00	£690.00
	-	○	○	○	○	£183.33	£220.00

○ Optional ● Standard – Not available

Please note: Some combinations of options can cause the vehicle to be unbuildable.

Please speak to your local ŠKODA Retailer or visit skoda.co.uk to configure your required specification. Information regarding tyre technical specifications can be found by visiting the ŠKODA car configurator [here](#).

OPTIONAL EQUIPMENT – CONTINUED

	SE Drive	SEL Executive	Sportline	L&K	VRS	Basic exc VAT	RRP inc VAT
DRIVER ASSISTANCE							
Park assist. Parks the car in parallel or bay spaces. Includes front and rear parking sensors.	○	○	○	○	○	£320.83	£385.00
Trailer assist.	-	-	-	○	-	£262.50	£315.00
Park assist with trailer assist. Only in combination with area view and electrically folding tow bar with adapter.	-	-	-	○	-	£554.17	£665.00
Adaptive Cruise Control (ACC).	○	○	○	○	○	£445.83	£535.00
Progressive steering.	-	○	●	●	●	£1,291.67	£1,550.00
Lane assist. A camera-based function which is designed to keep the vehicle within its lane and if necessary, alert the driver of an unwanted lane change.	-	○	○	●	○	£375.00	£450.00
Traffic sign recognition. Uses the multifunction camera to recognise and display traffic signs on the colour multifunction trip computer or virtual cockpit and navigation displays. Only available in combination with lane assist.	-	○	○	○	○	£87.50	£105.00
Travel Assist. Includes traffic sign recognition, adaptive lane assist, predictive adaptive cruise control and traffic jam assist. DSG engines also have emergency assist.	-	○	○	-	○	£895.83	£1,075.00
	-	-	-	○		£662.50	£795.00
Driver alert with fatigue sensor.	○	○	○	○	○	£41.67	£50.00
ENTERTAINMENT AND COMMUNICATION							
Columbus satellite navigation with 9.2" touchscreen display and integrated Wi-Fi including web radio.	-	○	●	●	●	£829.17	£995.00
Virtual cockpit including 10.25" Digital display. Can be customised with 5 views (Classic, Basic, Extended, Modern and Sport), with an additional Sports design for SportLine trim.	-	○	○	●	●	£350.00	£420.00
Wireless charging.	○	●	●	●	●	£233.33	£280.00
USB-C port by rear view mirror (charging only).	-	○	○	○	○	£45.83	£55.00
Tablet holders for rear of front seats.	-	○	-	○	-	£45.83	£55.00

○ Optional ● Standard – Not available

Please note: Some combinations of options can cause the vehicle to be unbuildable.

Please speak to your local ŠKODA Retailer or visit [skoda.co.uk](https://www.skoda.co.uk) to configure your required specification. Information regarding tyre technical specifications can be found by visiting the ŠKODA car configurator [here](#).

OPTIONAL EQUIPMENT – CONTINUED

	SE Drive	SE L Executive	Sportline	L&K	VRS	Basic exc VAT	RRP inc VAT
SAFETY AND SECURITY							
Crew protection assist and rear side airbags.	O	O	O	O	O	£454.17	£545.00
ISOFIX on front passenger seat.	O	O	O	O	O	£50.00	£60.00
ŠKODA ACCESSORIES							
Front mud flaps	O	O	O	O	O	£65.00	£78.00
Rear mud flaps	O	O	-	O	-	£65.00	£78.00
Rear mud flaps	-	-	O	-	O	£65.00	£78.00
All-weather protective interior mats	O	O	-	-	-	£74.14	£89.00
Textile floor mats for 3rd row seats	O	O	O	O	O	£27.50	£33.00
Prestige textile floor mats	O	O	-	-	-	£66.67	£80.00
Transverse roof rack	O	O	O	O	O	£190.83	£229.00
SKODA Roof box – black (380l)	O	O	O	O	O	£357.50	£429.00
SKODA Roof box – black (400l)	O	O	O	O	O	£574.17	£689.00
SKODA Roof box – silver (380l)	O	O	O	O	O	£357.50	£429.00
SKODA Roof box – silver (400l)	O	O	O	O	O	£546.67	£656.00
Smart Holder – adapter	O	O	-	O	-	£12.50	£15.00
Smart Holder – hanger	O	O	-	O	-	£20.83	£25.00
Smart Holder – hook	O	O	-	O	-	£10.83	£13.00
Smart Holder – tablet holder	O	O	-	O	-	£21.67	£26.00
SERVICE AND WARRANTY							
Extended warranty total four years or 80,000 miles.	O	O	O	O	O	£250.00	£300.00
Extended warranty total four years or 100,000 miles.	O	O	O	O	O	£283.33	£340.00
Extended warranty total five years or 100,000 miles.	O	O	O	O	O	£525.00	£630.00
Service Plan your first two services.	O	O	O	O	O	£380.00	£456.00

O Optional ● Standard – Not available
 Please note: Some combinations of options can cause the vehicle to be unbuildable.
 Please speak to your local ŠKODA Retailer or visit [skoda.co.uk](#) to configure your required specification. Information regarding tyre technical specifications can be found by visiting the ŠKODA car configurator [here](#).

YOUR KODIAQ, YOUR WAY

From stylish extras that make ordinary trips feel extraordinary, to practical touches that ensure nothing gets left behind, it's your call to make.



NEXTBASE 522GW DASH CAM AND GO PACK

Recording in 1440p HD, the new Nextbase 522GW Dash Cam now packs even more features into the UK's most popular dash cam brand, including built-in Amazon Alexa, HD touchscreen and Intelligent park mode - which begins recording when any physical vehicle movement is detected, keeping your vehicle safe when parked.



RUNNING BOARDS

To enhance the luxury look, our exclusive, stylish stainless steel, anti-slip running boards make it easier to get in and out of your car, as well as loading various objects stored in the roof box. To guarantee a high load capacity (up to 300 kg) and resistance to damage, they are made from metal and are designed to ensure that their contact surface perfectly copies that of the door sills.



ROOF BOX AND ROOF BARS

By using the roof box in conjunction with our aluminium roof bars, you solve a common problem when transporting large, awkward objects such as skis, snowboards, pushchairs and golf bags that don't fit into the luggage compartment of a fully seated car. With its spacious 380 litres of volume, it can comfortably carry up to 75 kg in total stability.



THERMO-ELECTRIC COOLING BOX (15L)

Its utility and versatility make this ideal for travelling, whether it's long journeys or for food that needs to be kept cool when doing your daily shop. It cools your food quickly and uniformly - drinks, fruit and other food are always within easy reach on hot summer days. When switched to Thermobox mode, it allows you to warm up snacks or keep them at the temperature you require.



NETTING SYSTEM

Practical netting system for the boot of the car to assist in stopping items from moving around. Useful to keep shopping in place or separated from other heavy items.



REAR SEAT PROTECTION AND DOG SAFETY BELT

Forget worrying about the cleanliness of your car, particularly when transporting your pet. This easy-to-clean seat protector is sufficiently sized to cover the back seats. It is waterproof, washable and has an anti-slip treatment for your pet's safety. The safety belt keeps your dog safe and is available in a variety of sizes.

PROTECTION PACK

Avoid mud splashes and debris around your KODIAQ's wheels and sills, as well as in the boot and underfoot. Included in the pack are mudflaps, front and rear floor mats (either textile or rubber), and a double-sided boot mat for five seat vehicles. All of these items can also be purchased separately.



MUDFLAPS

Mudflaps prevent stones, grit and road spray from ruining your precious bodywork. This custom design is moulded to fit snugly into the contours of the wheel arches.



REVERSIBLE BOOT LINER

Keep your car's boot immaculate with this easy-to-clean boot liner. Fabric on one side and plastic on the other, it fits perfectly onto the car's floor cushion and protects your boot space when transporting dirty or wet items.



FLOOR MATS

These quality mats will keep your carpeted floors looking pristine. Thanks to quick release floor poppers, they won't slip around beneath your feet. They come in textile fabric but rubber versions are also available for the more outdoorsy types.

PAINT OPTIONS

SOLID COLOUR



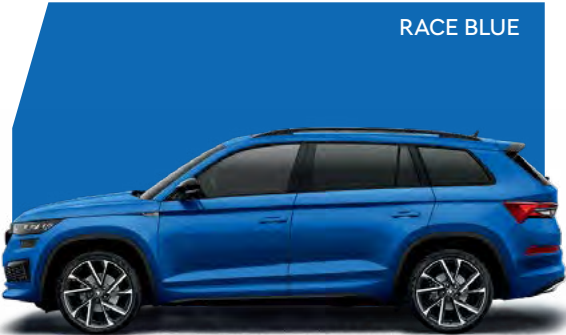
SPECIAL COLOURS



EXCLUSIVE COLOUR



METALLICS



* Colour restricted on SportLine. † Colour restricted on L&K.
Please note: Colour range is reproduced for illustration purposes only. Actual on-car colours may vary from those shown as screen technology does not allow exact reproduction of the paint colours. Your ŠKODA Retailer will be pleased to advise you.

VED (VEHICLE EXCISE DUTY)

FROM 1ST APRIL 2022

VED BAND*	CO ₂ (g/km)	Petrol car/diesel car* (tax class 48 and 49) 12 months	Diesel car** (tax class 49) 12 months	Alternative fuel car (tax class 59) 12 months
A	0	£0	£0	£0
B	1-50	£10	£25	£0
C	51-75	£25	£120	£15
D	76-90	£120	£150	£110
E	91-100	£150	£170	£140
F	101-110	£170	£190	£160
G	111-130	£190	£230	£180
H	131-150	£230	£585	£220
I	151-170	£585	£945	£575
J	171-190	£945	£1,420	£935
K	191-225	£1,420	£2,015	£1,410
L	226-255	£2,015	£2,365	£2,005
M	over 255	£2,365	£2,365	£2,355

OTR (On The Road)

Recommended 'On The Road' prices include delivery, 12 months Road Fund Licence, DVLA First Registration Fee and apply to the UK only.

VED (Vehicle Excise Duty)

All vehicles will be subject to Vehicle Excise Duty based on the fuel type of the vehicle and its carbon dioxide (CO₂) emissions level, measured in grams per kilometre (g/km). Due to changes in vehicle emissions data, CO₂ figures may differ on these vehicles if taken from current ŠKODA UK stock.

Vehicle Excise Duty (VED) is correct at time of publication, but this may alter to reflect any change in the applicable VED rate.

* This rate applies to diesel cars tested to real driving emissions step two (RDE2) standards

** This rate applies to diesel vehicles that do not meet the real driving emissions step two (RDE2) standards.

Note: Vehicles with a list price exceeding £40,000 (including factory installed options, delivery charge, number plates and VAT) will pay an additional £355 plus the standard rate VED from year 2 to, and including, year 6. After the 6th year only the standard rate VED will apply.

BiK CALCULATION EXAMPLE

Based on KODIAQ SE Drive 1.5 TSI 150PS ACT (5-seat) [†]		
P11D value		£30,960.00
Company car BiK tax based on CO ₂ emission level		35%
Taxable BiK (for 2022/2023 tax year):	35% of £30,960.00	£10,836.00
Annual company car tax (2022/23)		
20% income tax	20% of £10,836.00	£2,167.20
40% income tax	40% of £10,836.00	£4,334.40
Monthly company car tax (2022/23)		
20% income tax	£2,167.20 divided by 12 months	£180.60
40% income tax	£4,334.40 divided by 12 months	£361.20

Company car tax is based on the vehicle's carbon dioxide (CO₂) emissions. The higher the emissions, the higher its tax liability. When a company car is made available for private use a 'Benefit in Kind' value is calculated for tax purposes. The table above will help you calculate your tax liability.

P11D (expenses and benefits)

The P11D value is calculated by taking the On The Road (OTR) price for the vehicle, less the Road Fund Licence (RFL) and First Registration Fee (FRF).

BiK (Benefit in Kind)

The BiK percentage value is based on the CO₂ emissions of the vehicle for the current tax year 2022/2023.

[†] Available from stock only.

TECHNICAL SPECIFICATION

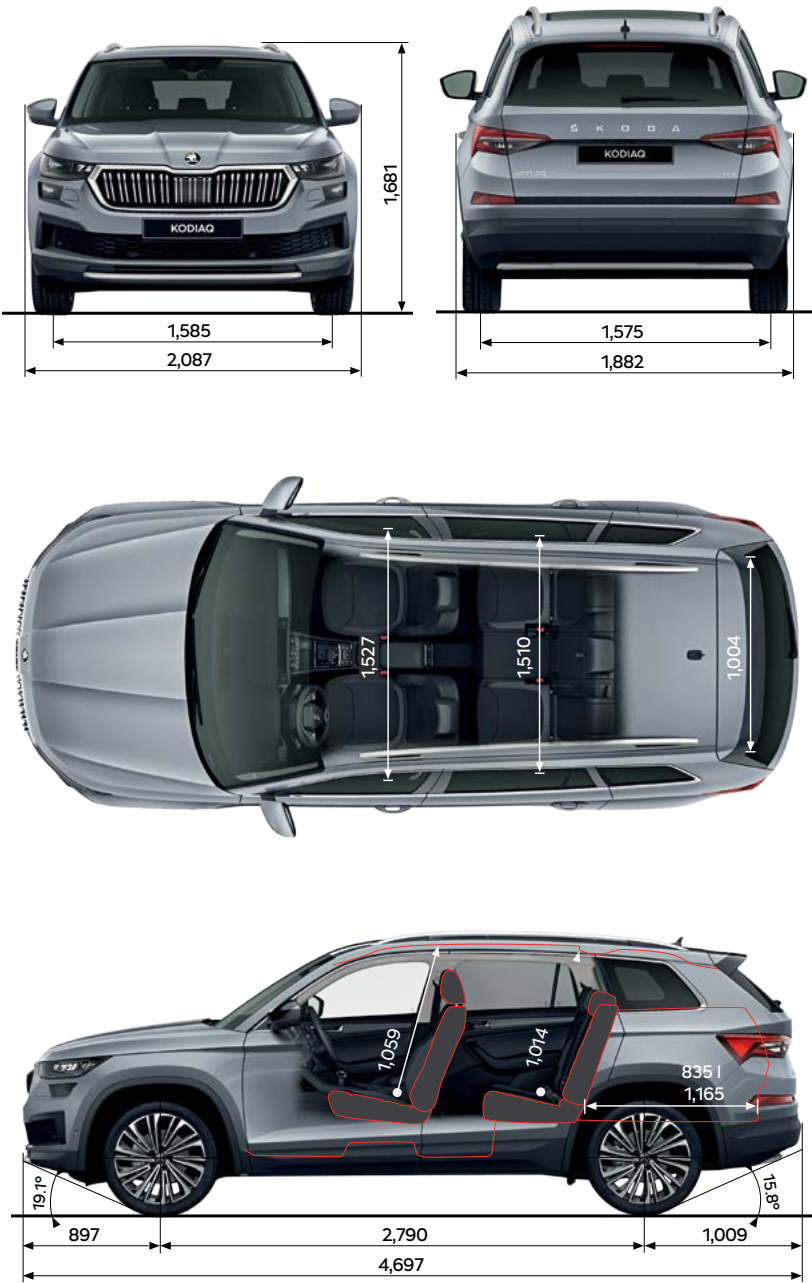
	CO ₂ emissions WLTP - Combined* - (g/km)	Standard Euro Emissions	AdBlue tank capacity - Litres	Transmission	Acceleration 0 - 62 mph - secs	Engine Torque - Nm	Max Speed - MPH (Km/h)	WLTP* - Combined mpg (l/100km)
SE Drive (5 seats) 1.5 TSI 150 PS ACT**	155 - 164	EU6d RDE Step 2 Compliant	20	7 Speed Automatic	9.6	360	124 (200)	47.9 (5.9) - 44.8 (6.3)
SE Drive (5 seats) 1.5 TSI 150 PS DSG ACT	158 - 167	EU6d RDE Step 2 Compliant	N/A	7 Speed Automatic	9.7	250	126 (204)	40.4 (7.0) - 38.2 (7.4)
SE Drive (5 seats) 2.0 TDI 150 PS DSG SCR	141 - 149	EU6d RDE Step 2 Compliant	20	7 Speed Automatic	9.6	360	126 (204)	52.3 (5.4) - 49.6 (5.7)
SE Drive (5 seats) 2.0 TDI 150 PS DSG 4x4 SCR	155 - 164	EU6d RDE Step 2 Compliant	20	7 Speed Automatic	9.6	360	124 (200)	47.9 (5.9) - 44.8 (6.3)
SE Drive (7 Seats) 1.5 TSI 150 PS ACT**	153 - 161	EU6d RDE Step 2 Compliant	N/A	6 Speed Manual	9.9	250	128 (206)	42.2 (6.7) - 39.8 (7.1)
SE Drive (7 Seats) 1.5 TSI 150 PS DSG ACT	159 - 167	EU6d RDE Step 2 Compliant	N/A	7 Speed Automatic	9.8	250	126 (204)	40.4 (7.0) - 38.2 (7.4)
SE Drive (7 Seats) 2.0 TDI 150 PS DSG SCR	143 - 149	EU6d RDE Step 2 Compliant	20	7 Speed Automatic	9.8	360	126 (204)	52.3 (5.4) - 49.6 (5.7)
SE Drive (7 Seats) 2.0 TDI 150 PS DSG 4x4 SCR	157 - 164	EU6d RDE Step 2 Compliant	20	7 Speed Automatic	9.8	360	124 (200)	47.1 (6.0) - 44.8 (6.3)
SE L Executive (7 seats) 1.5 TSI 150 PS ACT**	158 - 162	EU6d RDE Step 2 Compliant	N/A	6 Speed Manual	9.9	250	128 (206)	40.4 (7.0) - 39.8 (7.1)
SE L Executive (7 seats) 1.5 TSI 150 PS DSG ACT	164 - 169	EU6d RDE Step 2 Compliant	N/A	7 Speed Automatic	9.8	250	126 (204)	39.2 (7.2) - 38.2 (7.4)
SE L Executive (7 seats) 2.0 TSI 190 PS DSG 4x4	186 - 190	EU6d RDE Step 2 Compliant	N/A	7 Speed Automatic	7.8	320	132 (214)	34.5 (8.2) - 33.6 (8.4)
SE L Executive (7 seats) 2.0 TDI 150 PS DSG SCR	147 - 150	EU6d RDE Step 2 Compliant	20	7 Speed Automatic	9.8	360	126 (204)	50.4 (5.6) - 49.6 (5.7)
SE L Executive (7 seats) 2.0 TDI 150 PS DSG 4x4 SCR	161 - 166	EU6d RDE Step 2 Compliant	20	7 Speed Automatic	9.8	360	124 (200)	45.6 (6.2) - 44.8 (6.3)
SE L Executive (7 seats) 2.0 TDI 200 PS DSG 4x4 SCR	175 - 179	EU6d RDE Step 2 Compliant	20	7 Speed Automatic	7.9	400	133 (215)	42.2 (6.7) - 41.5 (6.8)
SportLine (7 seats) 1.5 TSI 150 PS DSG ACT	164 - 169	EU6d RDE Step 2 Compliant	N/A	7 Speed Automatic	9.8	250	126 (204)	39.2 (7.2) - 38.2 (7.4)
SportLine (7 seats) 2.0 TSI 190 PS DSG 4x4	186 - 190	EU6d RDE Step 2 Compliant	N/A	7 Speed Automatic	7.8	320	132 (214)	34.5 (8.2) - 33.6 (8.4)
SportLine (7 seats) 2.0 TDI 150 PS DSG 4x4 SCR	161 - 166	EU6d RDE Step 2 Compliant	20	7 Speed Automatic	9.8	360	124 (200)	45.6 (6.2) - 44.8 (6.3)
SportLine (7 seats) 2.0 TDI 200 PS DSG 4x4 SCR	174 - 179	EU6d RDE Step 2 Compliant	20	7 Speed Automatic	7.9	400	133 (215)	42.8 (6.6) - 41.5 (6.8)
L&K (7 seats) 2.0 TSI 190 PS DSG 4x4	188 - 190	EU6d RDE Step 2 Compliant	N/A	7 Speed Automatic	7.8	320	132 (214)	34.0 (8.3) - 33.6 (8.4)
L&K (7 seats) 2.0 TDI 150 PS DSG 4x4 SCR	163 - 166	EU6d RDE Step 2 Compliant	20	7 Speed Automatic	9.8	360	124 (200)	45.6 (6.2) - 44.8 (6.3)
L&K (7 seats) 2.0 TDI 200 PS DSG 4x4 SCR	176 - 179	EU6d RDE Step 2 Compliant	20	7 Speed Automatic	7.9	400	133 (215)	42.2 (6.7) - 41.5 (6.8)
vRS (7 seats) 2.0 TSI 245 PS DSG 4x4	198 - 202	EU6d RDE Step 2 Compliant	N/A	7 Speed Automatic	6.6	370	144 (233)	32.5 (8.7) - 31.7 (8.9)

* Figures shown are for comparability purposes; only compare fuel consumption and CO₂ figures with other vehicles tested to the same technical procedures. These figures may not reflect real life driving results, which will depend upon a number of factors including the accessories fitted (post-registration), variations in weather, driving styles and vehicle load. Data correct at 1st April 2022. Choice of wheels and other options may affect fuel consumption and emissions data. For more information, please see [skoda.co.uk/owners/wltp-info](https://www.skoda.co.uk/owners/wltp-info) or consult your retailer.

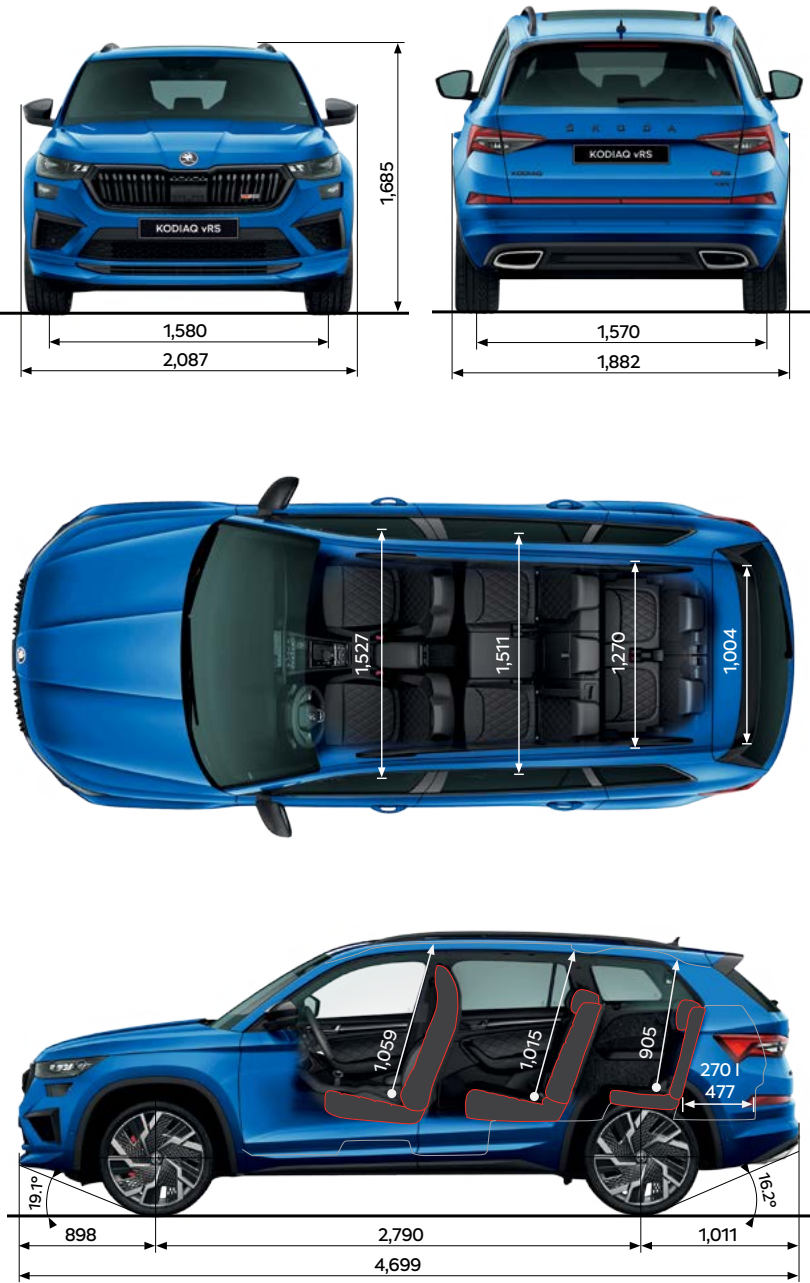
** Only available from stock.

TECHNICAL SPECIFICATION – CONTINUED

DIMENSIONS (5-SEAT)



DIMENSIONS (7-SEAT)



	Height - mm	Height (incl. roof rails) - mm	Length - mm	Wheelbase - mm	Luggage capacity (seats down / seats removed) - litres	Luggage capacity (third row seats down) - litres	Luggage Capacity (Seats up) - litres
SE Drive (5-seat)	1,661	1,681	4,697	2,790	2,065	-	835
SE Drive (7-seat)	1,660	1,681	4,697	2,790	2,005	765	270
SE L Executive (7-seat)	1,660	1,681	4,697	2,790	2,005	765	270
SportLine (7-seat)	1,666	1,686	4,699	2,790	2,005	765	270
L&K (7-seat)	1,666	1,686	4,699	2,790	2,005	765	270
vRS (7-seat)	1,665	1,686	4,699	2,790	2,005	765	270

ADDITIONAL INFORMATION

ŠKODA Financial Services

ŠKODA Financial Services offer a wide range of finance, insurance and servicing packages designed to fit your needs.

We specialise in providing simple and convenient funding options for drivers. The Solutions Personal Contract Plan offers a flexible, fixed-rate plan designed around your budget, by deferring a proportion of the car’s value until the end of the agreement. This means a significantly lower monthly repayment compared to a loan or hire purchase agreement, so you can have more car for your money or just reduce the size of your repayments.

You choose the size of your deposit, from as little as one monthly payment, and a repayment period that suits you. At the end of the term, there are three options:

1. Part exchange your car for a new ŠKODA on a Solutions contract.
2. Pay the optional final payment to own the car.
3. Return the car (subject to terms and conditions).

ŠKODA Financial Services also offers hire purchase, contract hire and service and maintenance plans. Speak to your ŠKODA Retailer for your personalised quotation today.

T&Cs apply. ŠKODA Financial Services.

ŠKODA Car Insurance

Complimentary ŠKODA Drive Away Insurance

Every new and Approved Used ŠKODA comes with five days’ complimentary insurance cover, getting you on the road quickly and easily so you can enjoy the things that matter. ŠKODA Drive Away Insurance is designed specifically for your ŠKODA and guarantees that your car will be repaired in a ŠKODA Approved Repairer. Speak to your ŠKODA Retailer for more details.

Subject to eligibility.

We will also provide you with an annual quote, with no additional questions asked, so you can continue to enjoy all the benefits ŠKODA Car Insurance offers.

Read on for more details.

ŠKODA Car Insurance

ŠKODA Car Insurance offers quality service and support when you need it most, with a policy tailored specifically for your ŠKODA. Just as you’d expect from ŠKODA, our annual car insurance provides comprehensive cover, with lots of benefits included at no extra cost.

Insure your car with ŠKODA and relax knowing we only use ŠKODA trained technicians, who know your car inside out, and ŠKODA genuine parts*, giving you the peace of mind that your ŠKODA will be repaired to the same high standards as before and to original manufacturer specifications.

*Excludes windscreen claims.

There's a lot to like about being a ŠKODA driver.

Get a quote or find out more at [insurewithskoda.co.uk/car-insurance](https://www.insurewithskoda.co.uk/car-insurance)

Alternatively, call us on **0345 246 9091**. Lines are open 8am-8pm Monday to Friday and 9am-5pm Saturday.

ŠKODA Car Insurance is underwritten by U K Insurance Limited. Calls may be recorded

ŠKODA Financial Services is a trading name of Volkswagen Financial Services (UK) Limited ("VWFS UK"), registered in England and Wales No.2835230 (registered office: Brunswick Court, Yeomans Drive, Blakelands, Milton Keynes MK14 5LR). Until 31st October 2022 Volkswagen Insurance Service (Great Britain) Ltd operates as an appointed representative of VWFS UK, after this date all references to Volkswagen Insurance Service (Great Britain) Ltd should instead be read as VWFS UK. VWFS UK is authorised and regulated by the Financial Conduct Authority. VWFS UK and U K Insurance Limited are not part of the same corporate group.

ŠKODA Gap Insurance

What is ŠKODA Gap Insurance?

If your ŠKODA is written off, your motor insurer will usually pay out based on the current market value of your vehicle. This could be a lot less than its original value and therefore may leave you with an unexpected shortfall.

Our Gap Insurance helps to cover the gap left by this shortfall to get you back in a new ŠKODA or help pay off any outstanding finance, lease or hire agreement.

There are two options for you to choose from:

ŠKODA Gap Insurance

This pays the difference between the write off settlement from your motor insurer and the price you paid for your ŠKODA or the outstanding balance payable to the finance company, whichever is the greater amount.

If your vehicle is leased or hired, ŠKODA Gap Insurance will cover the difference between the write off settlement from your motor insurer and the early termination charge. This includes any rentals paid in advance as a deposit up to £2,000.

Cover lasts for 36 months and the maximum claim limit is based on your vehicle purchase price.

ŠKODA Gap Insurance Plus

In addition to all the benefits of ŠKODA Gap Insurance, the ŠKODA Gap Insurance Plus policy includes a 12-month fixed benefit. This will start once your 36-month Gap Insurance cover ends.

If your vehicle is written off during the additional 12-month fixed benefit period of insurance, ŠKODA Gap Insurance will pay a fixed sum of £2,500.

Why choose us?

ŠKODA Gap Insurance gives you the financial protection your ŠKODA deserves. So you can relax knowing that if you need to make a claim, we could help you get back into a replacement ŠKODA.

To discover the additional benefits and full terms and conditions, please refer to the Cover Booklet.

For more information about ŠKODA Gap Insurance, please speak to your nearest participating ŠKODA Retailer or go online www.insurewithskoda.co.uk/gap-insurance

ŠKODA Gap Insurance from ŠKODA Financial Services is administered by Car Care Plan Limited and underwritten by Motors Insurance Company Limited.

ŠKODA Financial Services is a trading name of Volkswagen Financial Services (UK) Limited ("VWFS UK"), registered in England and Wales No.2835230 (registered office: Brunswick Court, Yeomans Drive, Blakelands, Milton Keynes MK14 5LR). VWFS UK is not part of the same corporate group as Car Care Plan Limited and Motors Insurance Company Limited.

Service and maintenance

Our range of servicing and maintenance plans will help to keep your ŠKODA in prime condition. Plus, the price is fixed so you won't be caught out by any unbudgeted costs.

All our service plans use genuine ŠKODA approved parts and trained technicians so you know your car is in the hands of experts. Parts and labour also come with two years warranty too.

Service Plan for cars under a year old

This covers your first two services for one payment of just £396 or 24 monthly payments of £16.50. The service plan includes a maximum of one oil service and one oil and inspection service with pollen filter change. The vehicle service regime affects the entitlement service plan if you choose to purchase this.

Our service plans are designed for customers that travel 10,000 miles or less per year. If you travel over 10,000 miles per year, or would prefer to add maintenance or tyres, then speak to your ŠKODA Retailer to create a more tailored service plan.

All cars must be set to time and distance servicing. Exclusions and terms and conditions apply. Offer is available to retail customers only from participating ŠKODA Retailers. Offers may be varied or withdrawn at any time. Freepost ŠKODA Financial Services. Pricing effective from 1st August 2020.

ŠKODA Financial Services is a trading name of Volkswagen Financial Services (UK) Limited, Brunswick Court, Yeomans Drive, Blakelands, Milton Keynes MK14 5LR Registered in England number 2835230.

Service intervals

When you order your KODIAQ, you can choose whether your car is on a fixed or a flexible service regime. Your ŠKODA retailer will help you decide which regime suits how your car will be driven, enabling your car to stay in the best possible shape.

Fixed regime: service every 10,000 miles or one year (whichever comes first).

This is recommended if the vehicle is likely to be used in the following way:

- > Driven fewer than 10,000 miles per annum.
- > Mainly short journeys, driven mostly in towns or cities.
- > High vehicle loading/towing and frequent hill climbs.
- > Heavy accelerating and braking, using high revs.

Flexible regime: Sensors in the engine detect when a service is needed. A service light will show between 9,000 and 20,000 miles or up to 24 months (whichever comes first).

The flexible service regime is recommended for vehicles with a daily mileage of more than 25 miles where the vehicle is driven regularly and mainly at a constant speed with minimum vehicle and engine loading, minimal towing and driven in an economical manner.

ADDITIONAL INFORMATION – CONTINUED

Roadside assistance

A three year, European-wide, unlimited mileage ŠKODA Assistance policy comes free of charge with every new ŠKODA. There's a team of specially trained technicians who carry the right diagnostic equipment and parts to get you back on the road as quickly as possible in the unfortunate event of a breakdown.

Provided in partnership with the AA. Exclusions and terms and conditions apply. For details please speak to your local ŠKODA Retailer.

Customer services

Talk to us on **03330 037 504**. No matter what the query, our dedicated call centre is always ready to listen. No matter how big or small the request, speak to one of our customer care advisors to see if they can help. The call centre is open Monday to Friday from 8.30am-5.30pm. You can also talk to one our advisors via live chat, on Monday to Friday from 8am-8pm.

A network that's here to help

You can be sure that as a ŠKODA customer, your retailer will look after you from the moment you walk through the door and throughout the life of your ŠKODA. Your KODIAQ will be serviced and maintained by specially trained ŠKODA technicians, and when you need a spare part you'll be happy to know that most are held in stock, or ordered within 24 hours. So if top class customer satisfaction is what you're after, the ŠKODA network will be there for you.

Motability

People who are in receipt of one of the following allowances, and have at least 12 months remaining on their reward, may be eligible for a vehicle via the Motability scheme.

Higher Rate Mobility Component of the Disability Living Allowance (HRMC of DLA), Enhanced Rate of the Mobility Component of Personal Independence Payment (ERMC

of PIP), War Pensioners' Mobility Supplement (WPMS) or Armed Forces Independence Payment (AFIP).

For full details of the scheme, current model availability and pricing, please contact the Motability specialist at your local ŠKODA Retailer.

Warranty

Peace of mind with a ŠKODA warranty

In the first two years of owning your car, you'll get the peace of mind of a two year unlimited mileage warranty. In addition, you'll also get a further warranty on new vehicles supplied through the appointed retail network until the vehicle has completed 60,000 miles or the end of the third year, whichever is sooner. Your KODIAQ also benefits from a three-year paint warranty and 12-year body protection warranty.

Exclusions and terms and conditions apply.

Owning a ŠKODA

Three-year vehicle warranty from new

First two years unlimited mileage.
Third year with 60,000 mile limitation, whichever is sooner.
Four to five years Optional Extended Warranty.

Three-year paint warranty

Up to 12 years body protection.

Exclusions and limitations

Wear and tear components will only be considered under the terms of the warranty for the first of six months or 6,500 miles, whichever is soonest. These include, but are not limited to brake linings and disc pads, clutch release bearings, clutch pressure plates and centre plates, tyres, wiper blades, seat and backrest covers, floor coverings, spark plugs, batteries for key fobs and alarms, light bulbs and shock absorbers. Mechanical adjustments including but not limited to adjustments to doors, flaps, boot lids, bonnets and sunroof, brake adjustment, clutch adjustment, v belt adjustment, headlight

adjustment, steering geometry adjustments and wheel balancing are excluded.

Damage (including but not limited to the following) is excluded:

- > Damage caused by your failure to take all reasonable steps to prevent mechanical damage from occurring.
- > Damage or defects caused by not having the vehicle serviced in accordance with the manufacturer's guidelines.
- > Damage or defects caused by improper use of the vehicle, neglect or use of the vehicle for motor sports activities.
- > Damage caused by an accident.
- > Damage to paintwork or chrome caused by external influences, such as climatic, chemical or industrial pollution.
- > Damage resulting from the use of non-original replacement parts.

Routine maintenance and servicing is not covered by the warranty. Incidental or consequential costs such as hotel charges, car hire, and loss of personal effects or income are not recoverable under the terms of the warranty.

Adding that little extra to your car

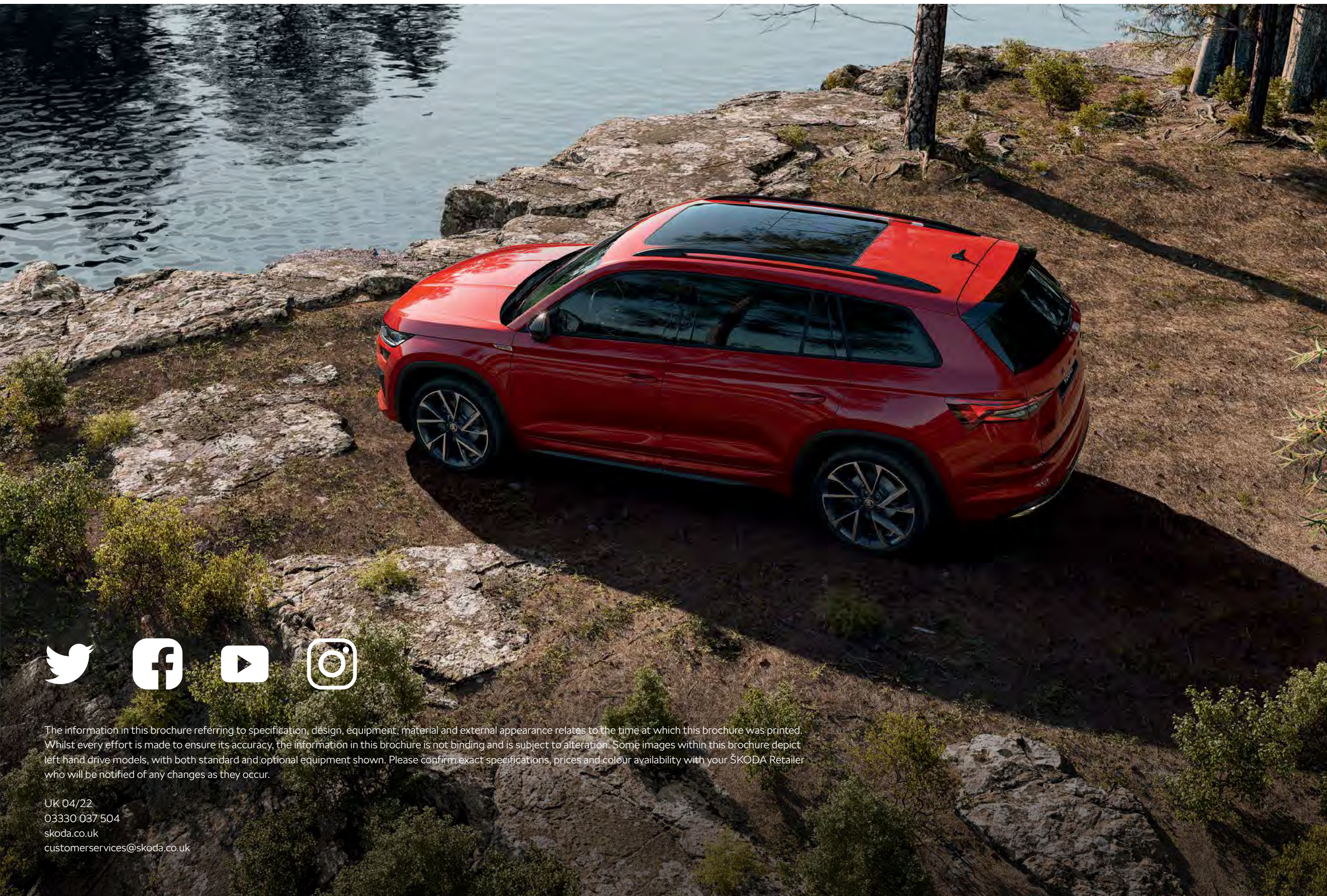
If the standard specification and factory fitted options aren't enough for you, then why not take a look at our range of retailer fitted accessories? A separate accessories brochure can be found at your local retailer, or can be viewed online at: skoda.co.uk/owners/accessories-and-merchandise

Figures shown are for comparability purposes; only compare fuel consumption and CO₂ figures with other vehicles tested to the same technical procedures. These figures may not reflect real life driving results, which will depend upon a number of factors including the accessories fitted (post-registration), variations in weather, driving styles and vehicle load. Data correct at 1st April 2022. Choice of wheels and other options may affect fuel consumption and emissions data. For more information, please see skoda.co.uk/owners/wltp-info or consult your retailer.

ŠKODA UK may change RRP's at any time (this includes where there are government changes in regulation and/or legislation). There may be a delay to any RRP displaying correctly on our materials. Always obtain prices from your chosen ŠKODA Retailer.

The information in this document referring to specification, design, equipment, material and external appearance relates to the time at which this brochure was created.

Whilst every effort is made to ensure its accuracy, the information in this document is not binding and is subject to alteration. Some images within this document depict left hand drive models, with both standard and optional equipment shown. Please confirm exact specifications, prices and colour availability with your ŠKODA Retailer who will be notified of any changes as they occur. Information regarding tyre technical specifications can be found by visiting the ŠKODA car configurator [here](#).



The information in this brochure referring to specification, design, equipment, material and external appearance relates to the time at which this brochure was printed. Whilst every effort is made to ensure its accuracy, the information in this brochure is not binding and is subject to alteration. Some images within this brochure depict left hand drive models, with both standard and optional equipment shown. Please confirm exact specifications, prices and colour availability with your ŠKODA Retailer who will be notified of any changes as they occur.

UK 04/22
03330 037 504
skoda.co.uk
customerservices@skoda.co.uk

ŠKODA

KODIAQ

GENUINE ACCESSORIES



ŠKODA



Effective November 2021

All prices include fitting (unless otherwise stated) and VAT, but may exclude painting where required. Please contact your ŠKODA Retailer for further information.

ŠKODA KODIAQ. THE REAL WINNER.

ŠKODA has further developed the emotive design of the KODIAQ, which can also be ordered as a 7-seater, and improved its aerodynamics.

The restyled front with an elevated bonnet and the redesigned, more upright ŠKODA grille reinforce the KODIAQ's bold appearance. New alloy wheels measuring up to 20 inches further enhance the car's dynamic and striking look. As a result of a further refined ŠKODA design language, the KODIAQ presents as even more emotive and self-assured.



DESIGN ELEMENTS

SHOW YOUR STYLE.

Finetune KODIAQ to your wishes. Seemingly minor details of the sports and design elements create a pleasantly unique style.



LED logo projector ŠKODA
(5E3 052 133H) £XXX
ŠKODA Genuine Accessories



Leather gear stick knob and sleeve – grey Lava
› Automatic transmission (566 064 220AYDK) £TBC
› automatic transmission 4x4 (566 064 220 YDK) £TBC
ŠKODA Genuine Accessories



Decorative frame under the gear shift gaiter
(567 072 390) £56
ŠKODA Genuine Accessories

Decorative door sill strips (with aluminium insert) (565 071 303) £130
ŠKODA Genuine Accessories



Decorative door sill strips (aluminium) (565 071 303B) £121
ŠKODA Genuine Accessories



Pedal covers – stainless steel
› Manual transmission (566 064 220AYDK) £TBC
› Automatic transmission (566 064 220 YDK) £TBC
ŠKODA Genuine Accessories

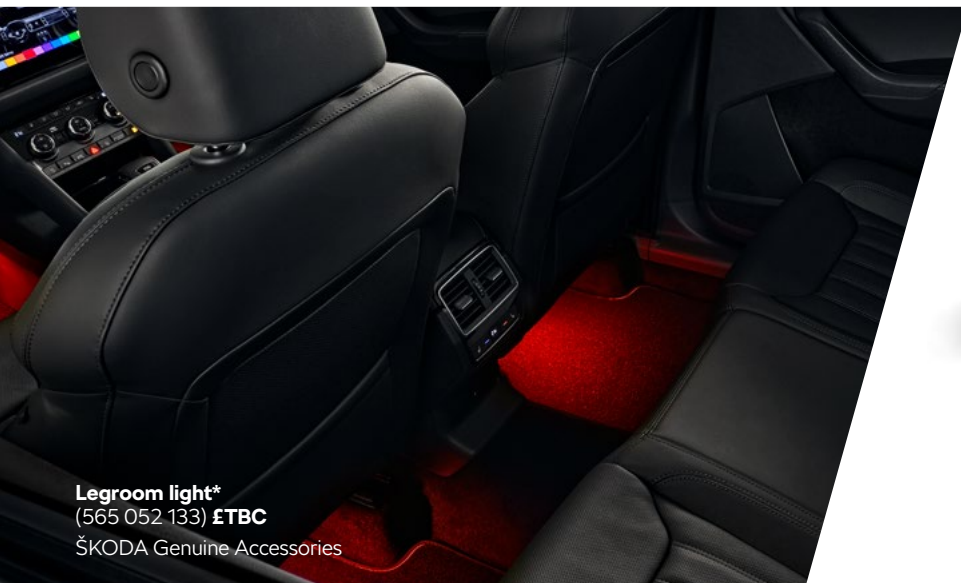


Footrest
(5E1 064 209) £TBC
ŠKODA Genuine Accessories

DESIGN ELEMENTS

SHOW YOUR STYLE.

Finetune KODIAQ to your wishes. Seemingly minor details of the sports and design elements create a pleasantly unique style.



Legroom light*
(565 052 133) £TBC
ŠKODA Genuine Accessories

EXTERIOR MIRROR CAPS

Enjoy the added sporting character of your KODIAQ with these stylish exterior mirror caps.



Exterior mirror caps

- › Black (57A 072 530) £65
- › Silver (57A 072 530A) £65

ŠKODA Genuine Accessories



FOOTBOARDS

Enjoy the added offroad sporting character and utility of your KODIAQ with these stylish and heavy-duty running boards.

Exterior mirror caps

- › Black (57A 072 530) £65
- › Silver (57A 072 530A) £65

ŠKODA Genuine Accessories

Leather key cover

- › Black stitching (3V0 087 012B) £22
- › Beige stitching (3V0 087 012A) £22

ŠKODA Genuine Accessories



*available later

ALLOY WHEELS

DID YOU KNOW... that all our wheels are subjected to rigorous ŠKODA homologation testing to prove their resistance to corrosion, weather and strainstress? Moreover, alloy wheels are protected by a layer of heavy-duty coating.

*available later



FORNAX* exclusive light-alloy wheel

8J x 20" ET41 for 235/45 R20 tyre

- › Silver metallic brushed (565 071 490M 8Z8) **£TBC**
- › Anthracite metallic brushed (565 071 490L HA7) **£TBC**

ŠKODA Genuine Accessories



ARCTOS exclusive light-alloy wheel

8J x 20" ET41 for 235/45 R20 tyre

- › Silver metallic brushed (565 071 490K 8Z8) **£149**
- › Black metallic brushed (565 071 490J FL8) **£149**

ŠKODA Genuine Accessories



CURSA exclusive light-alloy wheel

7.5J x 19" ET40 for 235/50 R19 tyre

- › Anthracite brushed (565 071 499AA HA7) **£309**
- › Black glossy brushed (565 071 499AB JX2) **£309**

ŠKODA Genuine Accessories

The product consists of a lightweight alloy wheel (including a wheel-centre cap with the ŠKODA logo).



ALLOY WHEELS

DID YOU KNOW... that all our wheels are subjected to rigorous ŠKODA homologation testing to prove their resistance to corrosion, weather and strainstress? Moreover, alloy wheels are protected by a layer of heavy-duty coating.

*available later



ALLOY WHEELS
VIDEO



IGNITE Light-alloy wheel 8.5J x 20" ET38
for 255/40 R20 tyre

- › Black gloss brushed
(565 071 490H JX2) **£419**
 - › Anthracite metallic brushed
(565 071 490F HA7) **£419**
 - › Silver metallic brushed
(565 071 490G 8Z8) **£419**
- ŠKODA Genuine Accessories



XTREME Light-alloy wheel 8.0J x 20" ET41
for 235/45 R20 tyre

- › Anthracite metallic brushed
(565 071 490C HA7) **£409**
 - › Black red design
(565 071 490E QXJ) **£409**
 - › Silver metallic brushed
(565 071 490D 8Z8) **£409**
- ŠKODA Genuine Accessories



VEGA Light-alloy wheel 8.0J x 20" ET41
for 235/45 R20 tyre

- › Black metallic brushed
(565 071 490A FL8) **£389**
 - › Anthracite metallic brushed
(565 071 490B HA7) **£399**
 - › Platinum matt brushed
(565 071 490 HZ9) **£389**
- ŠKODA Genuine Accessories



PROCYON Light-alloy wheel 7.0J x 19" ET43
for 235/50 R19 tyre

- › Black metallic brushed
(565 071 499Q FL8) **£309**
 - › Anthracite metallic brushed
(565 071 499P HA7) **£309**
- ŠKODA Genuine Accessories



ARONIA Light-alloy wheel 7.0J x 19" ET43
for 235/50 R19 tyre

- › Anthracite metallic brushed
(565 071 499M HA7) **£319**
- ŠKODA Genuine Accessories



BRAGA Light-alloy wheel 7.0J x 19" ET43
for 235/50 R19 tyre

- › Anthracite metallic brushed
(565 071 499L HA7) **£309**
- ŠKODA Genuine Accessories



SIRIUS Light-alloy wheel 7.0J x 19" ET43
for 235/50 R19 tyre

- › Anthracite metallic brushed
(565 071 499K HA7) **£309**
 - › Silver metallic brushed
(565 071 499J 8Z8) **£299**
- ŠKODA Genuine Accessories



CRATER Light-alloy wheel 7.0J x 19" ET43
for 235/50 R19 tyre

- › Black matt brushed
(565 071 499 ZG6) **£299**
 - › Anthracite metallic brushed
(565 071 499A HA7) **£299**
 - › Silver metallic brushed
(565 071 499H 8Z8) **£299**
- ŠKODA Genuine Accessories



May be used with snow chains.

ALLOY WHEELS

DID YOU KNOW... that all our wheels are subjected to rigorous ŠKODA homologation testing to prove their resistance to corrosion, weather and strainstress? Moreover, alloy wheels are protected by a layer of heavy-duty coating.

*available later



ALLOY WHEELS
VIDEO



TRIGLAV Light-alloy wheel 7.0J x 19" ET43
for 235/50 R19 tyre

- › Black metallic brushed
(565 071 499B FL8) **£299**
 - › Anthracite metallic brushed
(565 071 499C HA7) **£299**
 - › Silver metallic brushed
(565 071 499D 8Z8) **£299**
- ŠKODA Genuine Accessories



ELBRUS Light-alloy wheel 7.0J x 18" ET43
for 235/55 R18 tyre

- › Silver metallic
(565 071 498C 8Z8) **£229**
- ŠKODA Genuine
Accessories



TRITON Light-alloy wheel 7.0J x 18" ET43
for 235/55 R18 tyre

- › Silver metallic
(565 071 498B 8Z8) **£229**
- ŠKODA Genuine
Accessories



TRINITY Light-alloy wheel 7.0J x 18" ET43
for 235/55 R18 tyre

- › Black metallic brushed
(565 071 498 FL8) **£252**
 - › Anthracite metallic brushed
(565 071 498A HA7) **£252**
 - › Silver metallic brushed
(565 071 498D 8Z8) **£229**
- ŠKODA Genuine Accessories



RATIKON Light-alloy wheel 7.0J x 17" ET40
for 215/65 R17 tyre

- › Silver metallic
(565 071 497A 8Z8) **£219**
- ŠKODA Genuine
Accessories



MITYKAS Light-alloy wheel 7.0J x 17" ET40
for 215/65 R17 tyre

- › Silver metallic
(565 071 497B 8Z8) **£219**
- ŠKODA Genuine
Accessories



NANUQ Light-alloy wheel 6.5J x 17" ET38
for 215/65 R17 tyre

- › Black metallic
(565 071 497D FL8) **£219**
 - › Silver metallic
(565 071 497 8Z8) **£219**
- ŠKODA Genuine
Accessories



BORNEO Wheel covers for 17" wheels
6.5J x 17" – 4-piece set
(565 071 457 Z31) **£90.60**

ŠKODA Genuine Accessories



May be used with snow chains.

WHEEL CARE PACKAGE

For the car the wheels are as important as the shoes are for people. No matter if your ŠKODA car is wearing stylish, sports or function shoes, our WHEEL CARE PACKAGE (wheel covers, valve caps, safety bolts) offers a number of products that will make your wheels even more attractive and unique.



Cover for the complete set of wheels
(000 073 900N) **£36**

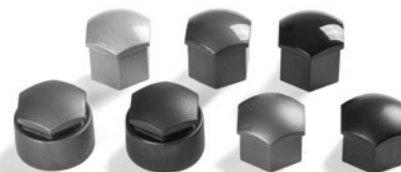
ŠKODA Genuine Accessories

Locking wheel bolts
(000 071 597C) **£56**

ŠKODA Genuine Accessories



Bolt caps



Bolt covers for wheels
with safety bolts:

Available in:

› Grey matt (1Z0 071 215A Z37)

£15

› Black matt (1Z0 071 215A 01C)

£15

ŠKODA Genuine Accessories

Bolt covers for wheels
without safety bolts:

Available in:

› Silver metallic (1Z0 071 215 7ZS) **£15**

› Grey gloss (1Z0 071 215 UZ7) **£15**

› Black gloss (1Z0 071 215 9B9) **£15**

› Grey matt (1Z0 071 215 Z37) **£15**

› Black matt (1Z0 071 215 01C) **£15**

ŠKODA Genuine Accessories

Decorative valve caps*
(000 071 215C) **£20**

ŠKODA Genuine Accessories



Decorative valve caps*

› Green emblem ŠKODA
Motorsport (000 071 215H)** **£TBC**

› Red RS emblem (000 071 215G)** **£TBC**

ŠKODA Genuine Accessories

* cannot be used for vehicles with Active TPMS

**available later

CONNECTIVITY



MyŠKODA

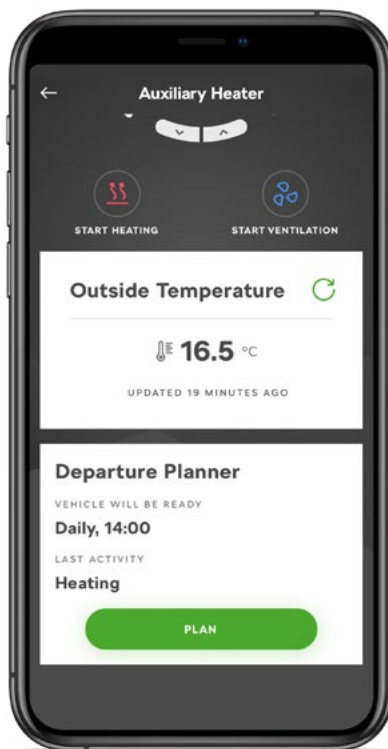
MyŠKODA

ŠKODA CONNECT AND OTHER DIGITAL SERVICES IN YOUR POCKET

It's about the journey, not just the destination – and with the ŠKODA KODIAQ, everyone in the vehicle can enjoy the trip. A connected multimedia system makes it easy to communicate with friends and family, get the information you need, and keep you and your passengers happy and entertained while you drive.

With the MyŠKODA application you can go even further in interaction with your vehicle. Use the application to remotely check the status of the vehicle, lock or unlock it, or display its parking position. Benefit from statistical insights into your last trip, and use them to plan a more efficient route next time. It offers also insight to the vehicle manual, quick tips for using the vehicle and its accessories or possibility to interact with your preferred service partner, with a number of further functions just waiting to be explored.

With MyŠKODA application in place, your car remains under your control at all times. The application is available for download on App Store (iOS) and Google Play (Android). ŠKODA Connect features are available based on ordered service bundle: Infotainment Online or Care Connect.



Connecting cable USB

Available in:

› Micro

(5JA 051 446J) £31

› Mini

(5JA 051 446H) £31

ŠKODA Genuine Accessories

› Apple

(5EO 051 510E) £39



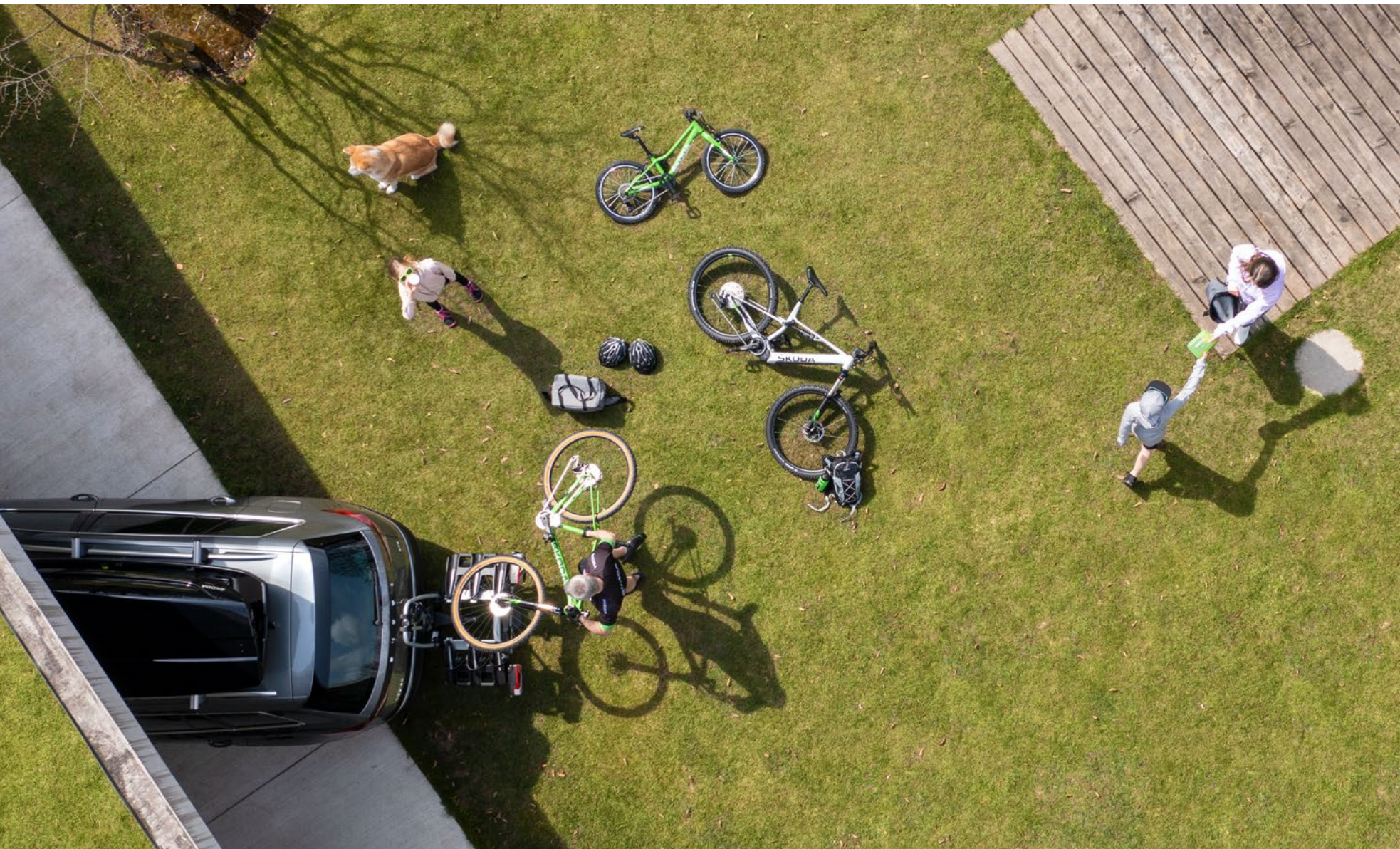
Adapter USB-C to USB-A 3.0

(000 051 443J) £8

ŠKODA Genuine Accessories



COMFORT & UTILITY



COMFORT & UTILITY



TEXTILE FOOT MATS

The mats with no-slip surface capture dirt as well as moisture.

ALL-WEATHER FOOT MATS

With these foot mats you will be able to enjoy your ride in the terrain - they perfectly protect the floor from mud, dirt and water.



Textile foot mats Prestige (double nubuck) (567 061 270B) **£30**
 › For 3rd seat row (565 061 450A) **£30**
 › Without inscription (567 061 270A) **£80**
 ŠKODA Genuine Accessories



Textile foot mats Prestige (567 061 270) **£80**
 ŠKODA Genuine Accessories



Textile foot mats Standard
 › (567 061 404) **£69**
 › For 3rd seat row (565 061 450) **£33**
 ŠKODA Genuine Accessories



All-weather foot mats (2-piece)
 › For 1st seat row (567 061 502A) **£TBC**
 › For 2nd seat row (565 061 512A) **£33**
 › For 3rd seat row (565 061 580A) **£29**
 ŠKODA Genuine Accessories

COMFORT & UTILITY

FRONT AND REAR MUD FLAPS

The front and rear mud flaps protect the lower areas of the vehicle body from dirt and damage caused by stones and debris striking them. In winter, when the corrosive salt is spread on the roads generally sticks to the mud flaps rather than to the vehicle body.



All-weather mat over the tunnel

(565 061 580) £17

ŠKODA Genuine Accessories



Mud flaps (front)

(565 075 111A) £77.50

ŠKODA Genuine Accessories



Mud flaps (rear)

(565 075 101) £77.50

ŠKODA Genuine Accessories

COMFORT & UTILITY

SMART HOLDER – COMFORT PACK

Comfort Pack M

- › Smart holder – adapter (2 pcs)
- › Smart holder – hook
- › Smart holder – multimedia holder
- › Smart holder – hanger
- › Bin for door panel – black

(000 061 122E) **£67**

ŠKODA Genuine Accessories

Comfort Pack lite

- › Smart holder – adapter (2 pcs)
- › Smart holder – hook
- › Smart holder – multimedia holder
- › Smart holder – hanger

(000 061 122N) **£57**

ŠKODA Genuine Accessories

Smart holder (adapter)

3V0 061 128 **£15**

ŠKODA Genuine Accessories



Smart holder (hanger)

(3V0 061 127) **£25**

ŠKODA Genuine Accessories



Smart holder (hook)

(3V0 061 126) **£13**

ŠKODA Genuine Accessories



Smart holder (multimedia holder)

(3V0 061 129) **£26**

ŠKODA Genuine Accessories

COMFORT & UTILITY

SMART STORAGE

Use these spaces to store practical items from ŠKODA Genuine Accessories for you travelling of any season of the year.



Umbrella

(000 087 600G 9B9) £23

ŠKODA Genuine Accessories



Bin for door panel

Available in:

- › Black (5JA 061 107 9B9) £16
- › Beige (5JA 061 107 WC4) £16

ŠKODA Genuine Accessories



Brush

(000 096 011D) £10

ŠKODA Genuine Accessories



Ashtray to cup holder

(000 061 142B) £16

ŠKODA Genuine Accessories

COMFORT & UTILITY

THERMOELECTRIC COOLING BOXES

Thanks to the cooling box you can always have cold drinks, fruit, snacks or anything that revives you on hand in your car.



Thermoelectric cooling/warming box (15L)

(5L0 065 400) £146

ŠKODA Genuine Accessories



Thermoelectric cooling box (20L)

(000 065 400G) £154

ŠKODA Genuine Accessories



PORTABLE COFFEE MAKER

You will surely welcome the simple, lightweight, elegant and above all compact itinerary coffee machine. This portable coffee maker is compatible with Nespresso aluminium capsules.

Portable coffee maker

(000 069 641D) £201

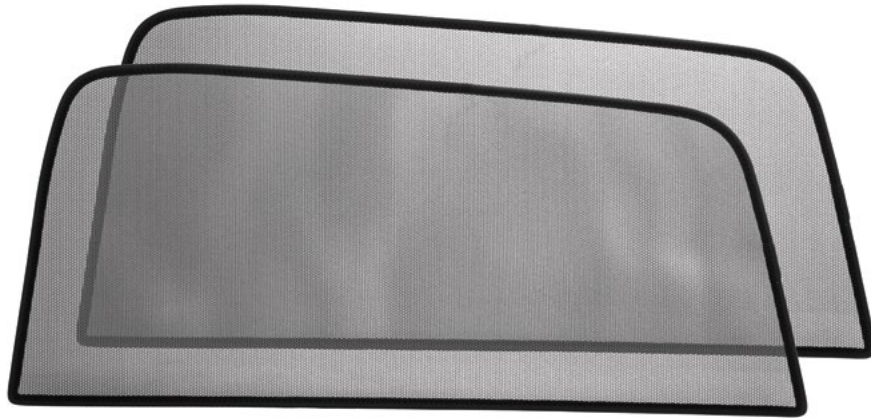
ŠKODA Genuine Accessories



COMFORT & UTILITY



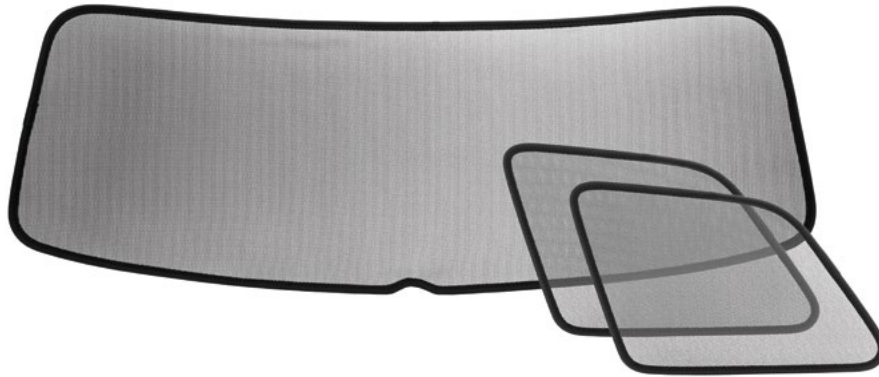
ASSEMBLY
MANUAL



Sun shade – rear side windows

(565 064 363A) £95

ŠKODA Genuine Accessories



Sun shade – tailgate and boot side windows

(565 064 361A) £92

ŠKODA Genuine Accessories



COMFORT & UTILITY

Boot dish with raised edges

- › For 7 seated, 15 cm edge (565 061 162A) £99
- › For 5 seated, 20 cm edge (565 061 162B) £155

ŠKODA Genuine Accessories



Boot dish

(565 061 162) £155

ŠKODA Genuine Accessories



Aluminium partition for boot dish

(565 017 254) £40

ŠKODA Genuine Accessories

Splitting element for aluminium partition for boot dish

(000017254A) £13

ŠKODA Genuine Accessories

BOOT DISH

The boot dish fits perfectly in the luggage compartment to protect it from getting dirty. The dish can be equipped with an aluminium partition complemented by the Splitting element for aluminium partition, enabling you to split the space according to your needs. It creates a space to stow items which you need to have on hand or that you may need to keep separate from the rest of your luggage.

COMFORT & UTILITY

EASY AND COMFORTABLE TRANSPORT

For easy transport you can use a number of products such as the netting system, various fixing elements or the luggage compartment bag.

You will appreciate all the solutions for protecting your boot, for example the carpet and the plastic tray.



Double-sided boot mat – foldable

(565 061 210) 5 seated £83

ŠKODA Genuine Accessories



Double-sided boot mat

› (565 061 163) £83

› With spare wheel (565 061 163A) £83

› 7 seated (565 061 210A) £83

ŠKODA Genuine Accessories

COMFORT & UTILITY



Universal fixing elements
(6V0 061 104) £13
ŠKODA Genuine Accessories



Foldable boot protection
(565 061 164) £149
ŠKODA Genuine Accessories

COMFORT & UTILITY



Netting system – silver (3-piece set)

- › For 5 seats (565 065 110) **£40**
- › For 5 seats with spare wheel (565 065 110A) **£40**
- › For 5 seats with false boot floor (565 065 110B) **£40**
- › For 7 seats (565 065 110C) **£40**

Netting system – black (3-piece set)

- › For 5 seats (565 065 110D) **£40**
- › For 5 seats with spare wheel (565 065 110E) **£40**
- › For 5 seats with false boot floor (565 065 110F) **£40**
- › For 7 seats (565 065 110G) **£40**

ŠKODA Genuine Accessories



Trunk grille – transverse
(565 017 221) **£299**
ŠKODA Genuine Accessories



Net under the retractable cover
(565 065 110H) for 5 seats **£73**
ŠKODA Genuine Accessories

COMFORT & UTILITY



LED lamp (12V)
(000 069 690L) £23
ŠKODA Genuine Accessories

LED LAMP
The interior LED light from the ŠKODA Genuine Accessories range increases your comfort during different occasions.

LED lamp (12V)
(000 069 690L) £23
ŠKODA Genuine Accessories

ICE SCRAPER AND BRUSH
Do not let the weather get the better of you. Be ready with our ice scraper and brush to handle ice and snow on the car. Naturally, they easily fit in the driver's and passenger's door.

Ice scraper
(000 096 010E) £7
ŠKODA Genuine Accessories



Brush
(000 096 011D) £10
ŠKODA Genuine Accessories



TRANSPORT

FOLDABLE TOWBAR. Manufactured from high-quality materials, the towbar has undergone load tests as well as rigorous testing for strength and resistance to corrosion.



Towbar adapter
(from 13-pin to 7-pin
socket)(EAZ 000 001A) £22
ŠKODA Genuine Accessories



Towbar – foldable
(565 092 160K) £945.20
ŠKODA Genuine Accessories

ŠKODA BICYCLE CARRIER FOR TOWBAR. The bicycle carrier for towbar is ideal solution for tow bar equipped vehicles and provides you with hassle-free and convenient handling of your bicycles. Its elegant style and solid design complements the look of ŠKODA vehicles perfectly.



Towbar rack for 2 bicycles
(000 071 105C) £399
ŠKODA Genuine Accessories



Towbar rack for 3 bicycles
(000 071 105Q) £605
ŠKODA Genuine Accessories



**ASSEMBLY
MANUAL**

TRANSPORT

SKI BAG

The ski bag made of water resistant and easy to wash material is designed for 2 pairs of skis with total weight up to 10 kg will protect your skis and poles from scratches. It will also prevent the dampening of back seats and other stuff transported in the luggage compartment.



Ski bag

(565 050 515) £100

ŠKODA Genuine Accessories



Roof rack bag

(000 071 156) £35

ŠKODA Genuine Accessories



Transverse roof rack (5LG 071 151)
£229

ŠKODA Genuine Accessories



Lockable bicycle rack

Available in:

- › Aluminium (000 071 128P) £125
- › Stainless Steel (000 071 128D) £85

ŠKODA Genuine Accessories



ASSEMBLY
MANUAL

TRANSPORT



Ski and snowboard rack (slide-out)*

000 071 129AC £199

ŠKODA Genuine Accessories



Ski and snowboard rack

000 071 129AA £139

ŠKODA Genuine Accessories

TRANSPORT

ROOF BOX 400L

Enjoy larger capacity and easier loading with the roof box ŠKODA. It will enable you to transport up to 6 pairs of skis or 5 snowboards. Thanks to increased overall volume 400L, it can hold everything you need on your trip.

Its advanced aerodynamic shape reduces both the fuel consumption and wind noise, while its design perfectly compliments the ŠKODA design language. With UV protection, which will ensure that it will always look like new.



Roof box 400L
Black (000 071 175D) £689
ŠKODA Genuine Accessories

Roof box 400L

Silver (000 071 175C) £689
ŠKODA Genuine Accessories



The roof box is accessible from both sides for comfortable loading and unloading gear.

TRANSPORT



Roof box 380L

Black (5L6 071 175A) £429

ŠKODA Genuine Accessories



Roof box 380L

White (5L6 071 175B) £429

ŠKODA Genuine Accessories



Roof box 380L

Silver (5L6 071 175) £429

ŠKODA Genuine Accessories



TRANSPORT

ROOF BOX 400L

Volume	400L 6 pairs of skis or 5 pcs snowboards
Weight	24,9 kg
Load capacity	75 kg
Dimensions	215 x 95 x 35 cm
Colour	black silver
Mounting system	T-groove

ROOF BOX 380L

Volume	380L 5 pairs of skis or 4 pcs snowboards
Weight	18 kg
Load capacity	75 kg
Dimensions	215 x 80 x 35 cm
Colour	black white grey
Mounting system	T-groove, U-bolts



SAFETY

SAFETY IN THE FIRST PLACE

We care about you, your loved ones as well as your pets. Choose from the collection of safety accessories for the whole family. Each type of child safety seat from the ŠKODA Genuine Accessories passes through a series of rigorous tests, including EuroNCAP crash tests and tests for flame resistance, content of harmful substances, wear resistance, and the quality of the coating.



Baby mirror

Available in:

- › Grey (000 072 549F) £49
- › Black* (000 072 549D) £16

ŠKODA Genuine Accessories



Protective pad under the child seat

(000 019 819A) £19

ŠKODA Genuine Accessories

0-13 kg



BABY-SAFE Plus child seat

(1ST 019 907) £360

ŠKODA Genuine Accessories

9-18 kg



ISOFIX Duo Plus Top Tether child seat

(DDA 000 006) £416

ŠKODA Genuine Accessories

15-36 kg



Kidfix XP child seat

(000 019 906K) £TBC

ŠKODA Genuine Accessories

15-36 kg



Kidfix II XP child seat

(000 019 906L) £TBC

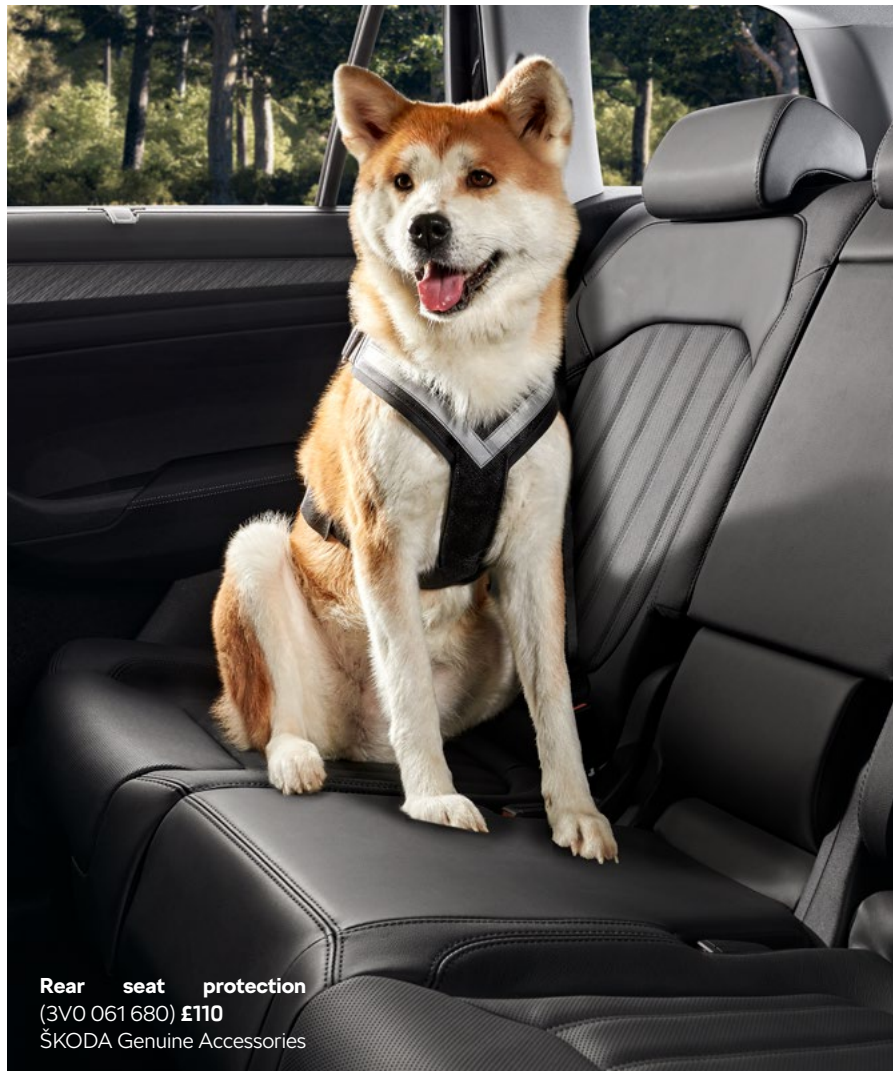
ŠKODA Genuine Accessories

Only for vehicles equipped with ISOFIX child seat mounts.

SAFETY

PROTECTION OF THE REAR SEATS

The practical back seat covers protect your vehicle interior from damage and soiling. Their size can be adapted to cover only one half of the back seats.



Rear seat protection
(3V0 061 680) £110
ŠKODA Genuine Accessories



Dog seat belt

- › Size S (000 019 409A) £59
- › Size M (000 019 409B) £75
- › Size L (000 019 409C) £80
- › Size XL (000 019 409D) £97

ŠKODA Genuine Accessories



SAFETY

Engine undertray – plastic

› TDI (565 071 608A) **£105**

› TSI (565 071 608) **£158**

ŠKODA Genuine Accessories



**Number plate holder
(ŠKODA Motorsport)**
(000 071 800N) **£10**

ŠKODA Genuine Accessories

**Number plate holder
(000 071 800M) **£TBC****

ŠKODA Genuine Accessories

**Number plate pad
(KEA 075 004) **£7****

ŠKODA Genuine Accessories



Rear parking sensor
(567 054 634A) **£565**

ŠKODA Genuine Accessories



Mechanical gearbox locking system for LHD

› Manual transmission (57A 071 775) **£TBC**
› Automatic transmission (565 071 775A) **£TBC**

ŠKODA Genuine Accessories

SAFETY



ASSEMBLY
MANUAL

Spare wheel set

> for 5 seats (TBC) **£270**

> for 7 seats (TBC) **£270**

ŠKODA Genuine Accessories



Spare wheel
(565 601 011C) 145/85 R18 **£183**
ŠKODA Genuine Accessories



Locking wheel bolts
(000 071 597C) **£56**
ŠKODA Genuine Accessories



Snow chains for 17" wheels
(000 091 387AS) 215/65 R17 **£88**
ŠKODA Genuine Accessories

SAFETY

PREPARE YOURSELF FOR ANY OCCASION. Each country has its own laws regarding which equipment must be carried in a vehicle. These products are just one of many items that you may need in your car in some emergency case. Shown accessories also can be used in different ways.

For example If you have a puncture on your commute or during an outing, the spare wheel set will prove to be invaluable.



First aid box

Content complies with amended Directive No. 216/2010 (3TO 093 108B) **£17**

ŠKODA Genuine Accessories



Reflective safety vest

Made of 100% polyester, supplied in a textile case

- > Yellow (000 093 056L) **£7**
- > Orange (XXA 009 001) **£8**

ŠKODA Genuine Accessories



Foldable snow shovel

Made of aluminium alloy, weight 750g, three-part, including a practical textile bag **£45**

ŠKODA Genuine Accessories



Spare bulbs set

(5LA052000) **£25**

ŠKODA Genuine Accessories



Tow rope

(GAA500001) **£18**

ŠKODA Genuine Accessories



Spare wheel set

(6VA 093 860) **£45**

ŠKODA Genuine Accessories

Warning triangle

Space-saving, but still stable and well visible, with folding metal feet for emergency roadside standing **£23**

(GGA 7000 01A) **£23**

ŠKODA Genuine Accessories



PROTECTION

CAR COSMETIC

For the details check our car cosmetics catalogue (QR code on the right).



CAR COSMETIC



Car care kit (000 096 356F) £40

ŠKODA Genuine Accessories



2-in-1 Display cleaner

This practical set comprises a cleaning agent and a high-quality cleaning cloth in a modern, minimalist design – a 2-in-1 that thoroughly cleans the screen, keeping it looking impeccable. The cleaning fluid and microfibre cloth ensure that any dirt or annoying fingerprints are completely removed. (000 096 311T) £10

ŠKODA Genuine Accessories



2-in-1 Refill pack

200 ml refill liquid for display cleaner and cockpit cleaner (will be available later). The refill bottle has an easy to use refill nozzle.

(000 096 311AA) £6

ŠKODA Genuine Accessories



SAFETY

NEXTBASE



**RATED
NUMBER 1
DASH CAM
BRAND BY
WHICH? 2018**

NEXTBASE DASH CAMS

HELPING TO MAKE ROADS SAFER

It's a fact that drivers with a Dash Cam take more care driving than those without. Nextbase work directly with the UK's police forces to help make roads safer. So when you're planning your next car journey, think about taking a Nextbase Dash Cam with you.



NEXTBASE 522GW DASH CAM

(ZGB000052522GW) **£165***

* RRP excluding fitment. Fully fitted RRP £198.



HEY ALEXA! WITH AMAZON ALEXA BUILT-IN, YOUR NEXTBASE 522GW GIVES YOU THE CAPABILITY TO PLAY MUSIC, PLACE CALLS, LISTEN TO AUDIOBOOKS, HEAR THE NEWS, CHECK THE WEATHER, CONTROL SMART HOME DEVICES, GET DIRECTIONS, FIND PARKING, AND MORE — ALL WHILE YOU KEEP YOUR HANDS ON THE WHEEL AND EYES ON THE ROAD.

The Nextbase 522GW offers full HD recording up to 1440p and an even larger 3" HD touch screen. Intelligent Parking Mode automatically records any bump or physical movement on the vehicle when left unattended. Boasting Bluetooth 4.2 technology and Wi-Fi connectivity, your latest video files can easily be sent to your smartphone or tablet.

EVERYTHING YOU NEED AND MORE.

**ALL NEXTBASE DASH CAMS
PURCHASED WITH ŠKODA COME
COMPLETE WITH A 32GB SD CARD
AND CARRY CASE.**



NEXTBASE 322GW

(ZGB000052322GW) **£110^**

^ RRP excluding fitment. Fully fitted RRP £143.



WITH INBUILT WI-FI, GPS LOGGING AND AN ACCOMPANYING SMARTPHONE APP, THE NEXTBASE 322GW IS THE MOST CONNECTED MID-RANGE DASH CAM ON THE MARKET.

You'd expect your phone and television to have Wi-Fi, so why shouldn't your Dash Cam? The 322GW reflects the modern connected world with inbuilt Wi-Fi that allows you to connect it directly with your smartphone or tablet. The 322GW boasts 1080p high-definition recording, GPS mapping and a 140-degree wide angle.

PROTECTION

Our new formulation produces superior depth of colour and shine, and creates a tough, protective coating for maximum resistance to environmental hazards.



ŠKODA RECOMMENDS

AUTOGLYM LIFESHINE

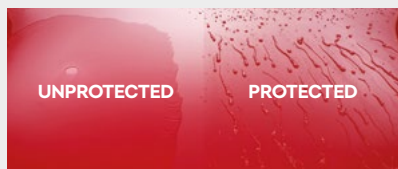
(ZGB 000 096 522) £399

LifeShine is the complete vehicle protection system that is professionally applied at the dealership to your car's paintwork, upholstery and glass.

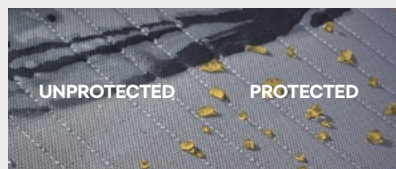
It offers you peace of mind by protecting your car from the day you take delivery for the lifetime of ownership, guaranteed.



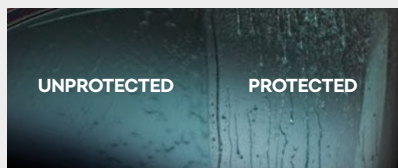
Autoglym complimentary aftercare kit.



Protects paintwork to lock in colour and a deep glossy finish that's easier to clean.



Protects fabric and leather upholstery from marks and unsightly stains.



Protects glass to improve wet-weather visibility.



With the LifeShine system, you'll also receive a lifetime guarantee.



**AUTOGLYM Gift Set
Perfect Interior**
(ZGB 000 096 498) £15



**AUTOGLYM Gift Set
Perfect Wheels**
(ZGB 000 096 496) £17.50



**AUTOGLYM Gift Set
Perfect Bodywork**
(ZGB 000 096 497) £18.50



**AUTOGLYM Gift Set
Perfect Bodywork
and Wheels**
(ZGB 000 096 499) £35



DRIVEN BY SOMETHING DIFFERENT

To build your own ŠKODA visit [skoda.co.uk](https://www.skoda.co.uk)

Speak to your local ŠKODA Retailer or visit [skoda.co.uk](https://www.skoda.co.uk) for all pricing and fitting information.

The information in this brochure referring to specification, design, equipment, material and external appearance relates to the time at which this brochure was produced. Whilst every effort is made to ensure its accuracy, the information in this brochure is not binding and is subject to alteration. Some images within this brochure depict left hand drive models, with both standard and optional equipment shown. Please confirm exact specifications, prices and colour availability with your ŠKODA Retailer who will be notified of any changes as they occur.

UK 11/21
03330 037 504
[skoda.co.uk](https://www.skoda.co.uk)
customerservices@skoda.co.uk