



WHATCAR?

**CAR
OF THE
YEAR
2020**

Small electric car
Less than £25,000

The new SEAT Mii electric.

Model, pricing and specification.





Contents.

05

**Created in
Barcelona.**

07

**Why go
electric?**

19

**Trim &
specification.**

23

**Pick your
colour.**

11

**Safety &
technology.**

12

Technology.

14

**Power your
journey.**

17

**FAQs &
mythbusting.**

25

**Equipment &
option prices.**

28

**Technical
data.**

31

**VED &
Benefit in Kind.**

32

**Warranties &
service plans.**





01 | CHARGING
STATION

Created in Barcelona.

1953. The first SEAT rolls off our Barcelona production line and a whole country starts moving. More than 60 years later and we're moving people all over the world.

But Barcelona still inspires us. It's creative spirit runs through our veins. Feeds into every car we produce. (In fact, 50% of the energy we use to make our cars comes direct from Mediterranean sunshine). This is a city that never stops. And neither will we. Why? Because you have places to be.



Model shown: Mii electric in Deep Black metallic paint.

6 The new SEAT Mii electric. Model, pricing and specification list.

[Back](#) | [Forward](#) | [Contents](#)



Why go electric?

When it comes to great design, there's no such thing as normal. Introducing the new SEAT Mii electric, the small city car with an even bigger personality.

Discover the benefits of electric driving with SEAT's first all-electric vehicle, the Mii electric. Packed full of power with minimal recharge time, the Mii electric is ready to go the distance when you are.

- The 100% electric car that accelerates to 31mph in only 3.9 seconds
- A range of up to 160 miles^ with combined city and motorway driving and up to 223 miles^ with 100% city driving*
- It's compact size helps you simplify every day city driving, from easily finding parking spots to entering emission-free zones

*WLTP range of up to 160 miles with combined city and motorway driving and up to 223 miles with 100% city driving.

Why go electric?

The new SEAT Mii electric.



Range.

160 miles^ (WLTP)



Speed.

0-31mph = 3.9 seconds



Charge.

0-80%:
– 16 hrs three-pin domestic
– 4 hrs wallbox
– <1hr rapid charge at
public charging station



Running cost.

Pence per mile = 3.5p



Charge cost.

£5.29 for full battery*

*Charge cost is based on the current average electricity unit cost per kWh set by UK Power (£0.143p). Figures are subject to change.





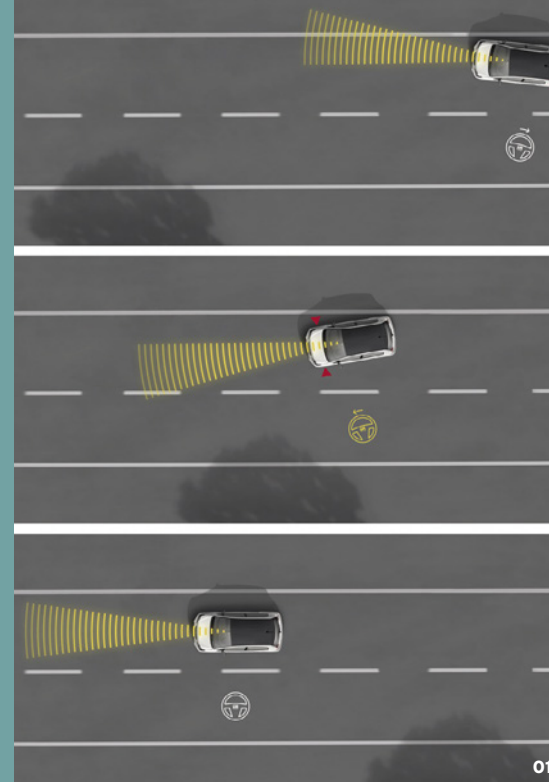
Moving in new ways, safely.

The new SEAT Mii electric was developed for the doers and the thinkers. It's for those who want to live their best life possible, in the best world possible.

Moving in new ways, the Mii electric can help you move more safely with lane assist, which uses corrective steering to keep your car in its lane and traffic sign recognition, which displays important road information directly on the map. The rain sensor ensures good visibility at all times, while the rear parking sensors make challenging parking spaces a breeze.

- 01.** Lane assist.
- 02.** Traffic sign recognition*.
- 03.** Rain sensor.
- 04.** Rear parking sensors.

*Traffic sign recognition, is used in conjunction with the Drive Mii app.





Technology.

Be ready for tomorrow.

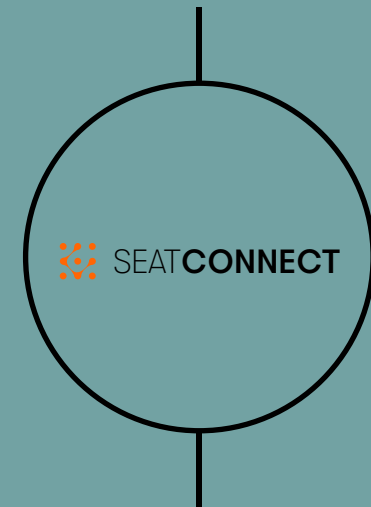
SEAT CONNECT.

On the go? Manage your car and battery from your smartphone, so you can be ready to go before you even leave the house.

The new SEAT Mii electric is the first SEAT model to feature SEAT CONNECT, the app that puts a whole host of functions at your fingertips. Use the app to remotely set the interior temperature before you leave the house on a cold winter's morning, programme charging times to suit your routine or locate your car in a busy car park.

The SEAT Connect services can be operated only by using available public communication technologies. Please note that due to development of these technologies, especially mobile networks, SEAT cannot guarantee consistent availability in all countries for the duration of SEAT Connect services. Possible changes in technology may cause permanent unavailability of them.

Mii electric



Remote access

- Driving data
- Parking location
- Vehicle status
- e-Manager
- Remote climate control
- Departure times

Services and functionality.

SEAT CONNECT comes as standard with every Mii electric with all services and functionality.

The app allows you to control a multitude of functions in your Mii electric.

Remote access features.

Overview	
Driving data	Displays the driving data from your recent journeys and gives you the opportunity to review and improve your energy consumption.
Parking position	Your Mii electric stores its location at the end of every journey, allowing you to quickly locate it again in a busy city centre or large car park.
Remote climate control	You can remotely set the desired cabin temperature, from the comfort of indoors. Minimum 20% charge is required, but if the vehicle is plugged in there is no drain on the battery at all.
Departure times	Programme your Mii electric with your weekly schedule, and it will optimise charging and climate control settings to be ready for you at the right time.
Vehicle status	Access information about remaining range, battery charge status or service information, plus gain peace of mind knowing that the doors are locked and lights are off.
e-Manager	Remotely start and stop the charging process, or set the car to take advantage of cheaper overnight electricity rates.

The SEAT Connect services can be operated only by using available public communication technologies. Please note that due to development of these technologies, especially mobile networks, SEAT cannot guarantee consistent availability in all countries for the duration of SEAT Connect services. Possible changes in technology may cause permanent unavailability of them.



Power your journey.

Charging made simple.

Charging at home.

Charging your Mii electric at home is likely to become part of your every day routine, so we've made it simple.

There are two options for home charging, either via a traditional three-pin plug or a specially installed wallbox [The Mode 3 DC cable is standard equipment].

Pod Point is SEAT's recommended supplier to install a wallbox at your home and guide you through the complete home charging journey, from a pre-installation consultation to managing the home grant. A full demonstration will make sure you understand how to charge your Mii electric using your new Pod Point wallbox.

Know your power supplies.

AC – Alternating Current
DC – Direct Current

Why do we recommend a wallbox is installed to charge your Mii electric?

While a three-pin socket can charge your Mii electric at home, a home wallbox is recommended due to the high energy demands and the significantly faster charge time. A 7.2kW wallbox can charge your Mii electric three times faster than with a three-pin plug. A home wallbox installed by an accredited installer like Pod Point ensures that your car receives a full night of uninterrupted fast charge.

Are Pod Point units eligible for the OLEV grant?

Yes, all home charging wallboxes are eligible for the £350 OLEV EVHS grant. See www.gov.uk/government/publications/customer-guidance-electric-vehicle-homecharge-scheme for further information.

The new Mii electric has a battery size of 36.8kWh with 32.3kWh of useable (net) energy. To regain longevity in the battery life, it is recommended to only charge 0-80% allowing the battery to always have 1-2% of safety battery.

Charging on the go.







While you're out on the road, you can choose from a number of public charging points to top up your Mii electric. Zap Map is a great website (zap-map.com) to locate suitable chargers across the UK.

Combined charging system (CCS).

AC & DC rapid charging, is available at most public charging stations. Rapid chargers are the fastest way to charge an EV vehicle and often found in motorway services or in locations close to main roads. The Mii electric is equipped with CCS (combined charging system), which supplies high power direct or alternating (DC/AC) to charge a battery to 80% quickly. Mii electric allows for a maximum of up to 40 kW DC charge and will recharge the battery to 80% in 1 hr.

Regenerative braking.

This is the recovery of energy usually lost when braking. Mii electric optimises braking energy to prolong it's battery life and not reduce your range.

Charge type	Mode	Source	Power	Amps	Charge time (80% charge*)
	Mode 2	 Mains charging (Domestic three-pin home plug)	2.3 kW AC	10A	16 hrs
	Mode 3	 Home wallbox and public / work charge point	7.2 kW AC	32A	4 hrs
	Mode 4	 Rapid charge (Combined Charge System (CCS))	40 kW DC / 7.2 kW AC	32A	1 hr

*Once the charging reaches 80%, the charging speed will slow down in order to reduce the heat and protect the battery's longevity.



Joining the buzz.

Electric vehicles (EVs) are slow and not fun to drive.

Unlike conventional internal combustion engines (ICE), where there is a lag in reaching maximum torque as the engine rises relatively slowly to its maximum threshold, maximum torque is produced instantly with EVs. The new SEAT Mii electric accelerates from 0-31 mph in 3.9 seconds.

EVs cost so much more than an ICE vehicle, so why buy?

While the initial purchase cost of an EV can be higher compared to equivalent petrol or diesel powered vehicles, this is offset by substantially lower running costs over the vehicle's lifetime.

EVs all look strange.

The design of Mii electric is based on the well-known Mii, but updated with new connected technologies, exterior highlights and a refreshed interior in addition to a whole new battery powertrain.

There aren't enough public charging points in the UK.

With new charge points being added daily, the UK's charging infrastructure is continuously expanding to meet the growing demand for EVs. Zap Map is a great website (zap-map.com) and app that helps you locate suitable chargers across the UK.

You cannot charge an EV in the rain.

This is a myth. You can charge your electric car in the rain with no fear of electric shocks or damage to the car. Both the car and the charger itself have several levels of protection. It's also completely safe to take your EV through all types of car washes.

Once you factor in the construction of the car and all of the logistics you end up with the same CO₂ impact as a petrol or diesel car.

Although some of the CO₂ savings made by an electric vehicle are offset by higher emissions during its production, it still has a lower carbon footprint than the standard internal combustion vehicle.

They run out of charge too quickly.

Things are changing quickly in the electric car world. Whereas the furthest an electric hatchback could travel per charge in 2010 was 70-100 miles, the new SEAT Mii electric has a range of 160 miles[^].

For example, if the average daily commute is only 20-25 miles, this means you would only need to charge the Mii electric once a week. It takes four hours on a standard home wallbox or a public charge point to get to 80% battery charge on a Mii electric (giving you over 120 miles[^] of range).

What is the estimated cost of charging a Mii electric from zero charge to 100%?

The average overnight electricity rate is approximately 14.37p per kWh. This means that charging a Mii electric could cost only around £5.29, or about 3.3p per mile.

Please visit seat.co.uk for more details.



Model shown: Mii electric in Chester Blue metallic paint with Deep Black contrast roof and door mirrors.

Trim & specification.

The new Mii electric.

Ready when you are.

£20,300*

The new SEAT Mii electric has a new urban feel dash design and chrome detailing with a 5" colour display, 6 speaker radio, handy smartphone holder and ambient lighting.

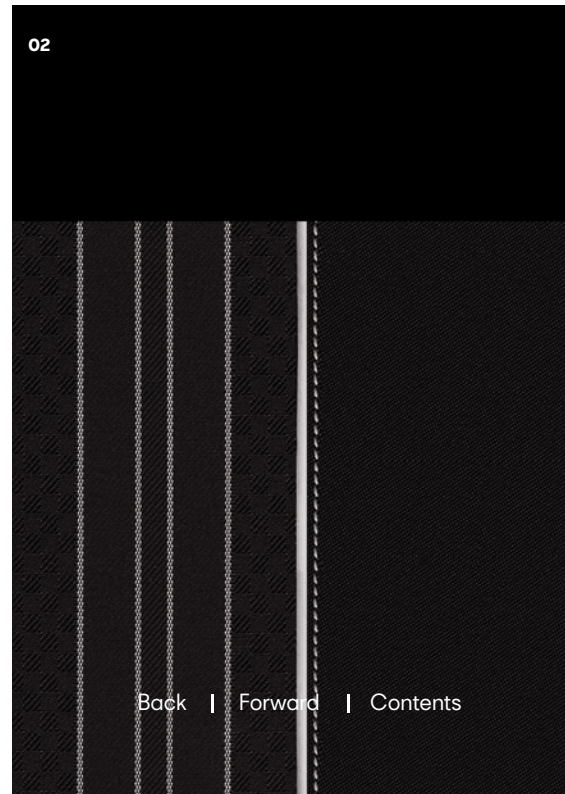
Top specifications

- 16" alloy wheels in 'Cosmo' Grey Matt
- Heated front sport seats
- Cruise control
- Fast charging (Combined AC/DC charging system)**
- SEAT CONNECT
- Lane assist & traffic sign recognition
- DAB
- Rear parking sensors

*The retail cash price includes up to £2,500 HMRC government grant for an electric plug in car.

**0-80% 1hr rapid charge at public charging station.

19 The new SEAT Mii electric. Model, pricing and specification list.



[Back](#) | [Forward](#) | [Contents](#)

The new Mii electric.

	Output / PS	WLTP CO ₂ g/km	Insurance group (1-50)	BIK 2021/22*	Basic price	VAT @ 20%	Retail price** (P11D value)	1st Year RFL Rate 2021/22	1st reg fee 2021/22	Recommended 'On The Road' Price	Recommended 'On The Road' with the PICG deducted**
Mii electric	61kW / 83PS	0	12E	1%	£18,954.17	£3,790.83	£22,745.00	£0	£55	£22,800.00	£20,300.00

*BIK value is based on WLTP CO₂'s and applicable from 01/04/2021.

**The Plug in Vehicle Grant is a grant currently offered by the Office for Low Emission Vehicles (OLEV) to eligible manufacturers to promote the purchase of ultra low emission vehicles. The Mii electric currently qualifies for this scheme. The £2,500 grant has already been deducted from the recommended 'on the road' price shown (and therefore the recommended 'on the road' price will increase in the event that grant funding is withdrawn, or eligibility for the grant or the grant amount changes, for any reason). Customers purchasing Mii electric will receive a maximum of £2,500 off the purchase price. Your SEAT Retailer will submit the details of your order online in order to claim the grant funding. The grant is subject to full T&Cs and eligibility requirements. To find out more contact your SEAT Retailer or visit www.gov.uk/plug-in-car-van-grants. Vehicle eligibility and grant figure correct as at 01/04/2021.

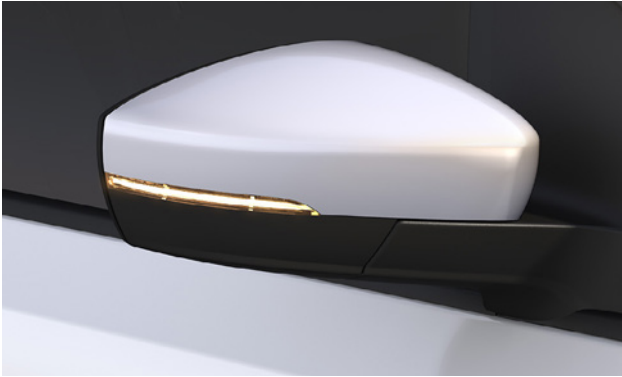
The Recommended 'On The Road' price includes delivery charge to Retailer and number plates, one year's Road Fund Licence at the 1st year rate (£0 - £2,245 depending on the CO₂ output of the vehicle), and the new vehicle registration fee (£55). VAT is calculated at 20.0%. SEAT may change RRP's at any time (this includes where there are government changes in regulation and/or legislation). There may be a delay to any RRP displaying correctly on our materials. Always obtain prices from your chosen SEAT Retailer. These figures were obtained after the battery had been fully charged. The Mii electric is a battery electric vehicle requiring mains electricity for charging. Figures shown are for comparability purposes. Only compare fuel consumption, CO₂ and electric range figures with other vehicles tested to the same technical procedures. These figures may not reflect real life driving results, which will depend upon a number of factors including the starting charge of the battery, accessories fitted (post-registration), variations in weather, driving styles and vehicle load. Zero emissions while driving. Data correct at 01/04/2021.



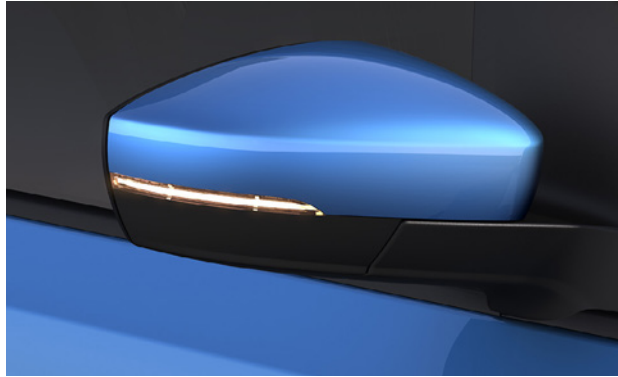


Model shown: Mii electric in Chester Blue, with Deep black contrast roof and door mirrors.

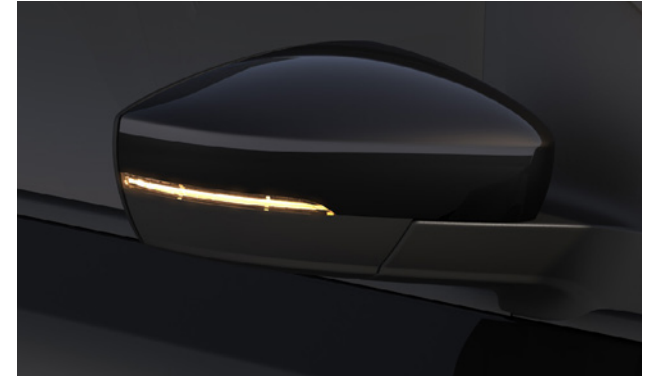
Pick your colour.



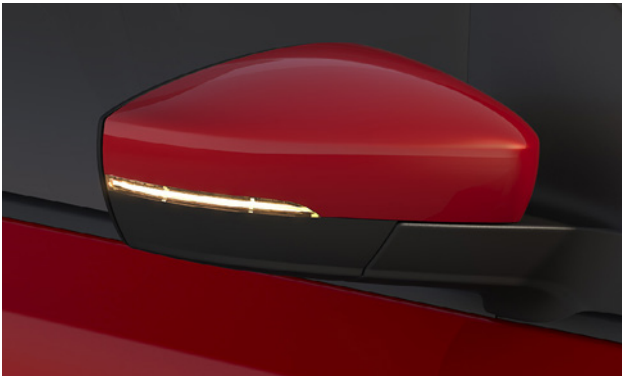
White¹



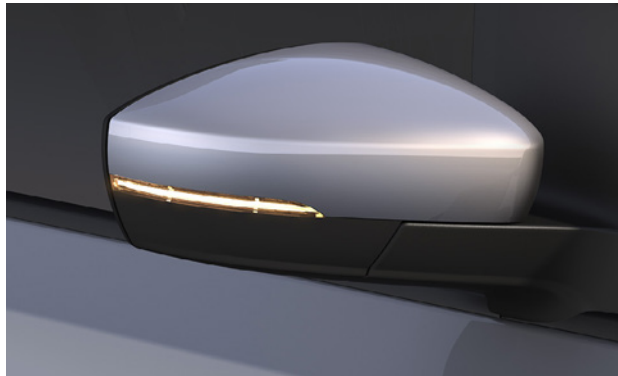
Chester Blue²



Deep Black²



Tornado Red¹



Tungsten Silver²

And pick your roof too.

All colours are available with a Deep Black contrast roof.

¹Non-metallic ²Metallic

Print and screen view do not provide an exact representation of colour. Please refer to the paint colour moulds at your local SEAT Retailer.



Equipment.

■ Standard □ Optional

	Mii electric
Wheels and tyres	
16" 'Cosmo' Grey Matt alloy wheels with 185/50 R16 81H tyres	■
Emergency tyre repair kit	■
Charging and Battery	
Charging inlet combo 2 (CCS charging)	■
Charging cable mode 3, type 2/3 (16amp)	■
36.8 kWh battery	■
Exterior equipment	
Body-coloured door mirrors, bumpers and door handles	■
Contrast roof (Deep Black with matching door mirrors)	□
Dark tinted rear windows	■
Door mirrors (Heated and electrically adjustable, with integrated indicators)	■
Exterior door graphics & rear lettering	■
Halogen front headlights	■
LED daytime running lights	■
Metallic paint	■
Rear fog light	■
Infotainment	
Bluetooth® phone connection	■
Colour screen radio (5") – SD card slot, AM/FM radio	■
DAB (digital audio broadcasting)	■
Smartphone integration with Drive Mii app – Universal smartphone cradle, TomTom® satellite navigation, Eco Trainer, Trip computer integration, In phone media and radio control, USB port and AUX-in port	■
Six speakers	■
SEAT connect app (gen 1 – remote climate control, e-Manager, departure times, parking position, driving data, vehicle status, doors and lights)	■
USB cable for Apple & Android compatibility	■

The SEAT Connect services can be operated only by using available public communication technologies. Please note that due to development of these technologies, especially mobile networks, SEAT cannot guarantee consistent availability in all countries for the duration of SEAT Connect services. Possible changes in technology may cause permanent unavailability of them.

Equipment.

■ Standard

	Mii electric
Interior equipment	
Ambient lighting (white)	■
Driver and passenger sunvisor with mirror on passenger side	■
Front courtesy light	■
Seats and trim	
Black interior roof	■
Chrome detailing (door handles and dash inserts)	■
Door and side trim panel (body coloured)	■
Heated front sport seats with cloth upholstery and integrated headrests	■
Height-adjustable driver's seat	■
Leather steering wheel, gear knob & handbrake lever	■
New dashboard	■
Split folding rear seats (60/40)	■
Two height-adjustable rear headrests	■
Functional and mechanical	
Air conditioning	■
Cruise control	■
Electric front windows	■
Electro-mechanical power steering (speed-sensitive)	■
Heated front and rear windscreens	■
Height-adjustable sports steering wheel	■
Rain sensor wipers	■
Rear parking sensors	■
Comfort suspension	■
Instrument panel	
RPM counter, Digital clock, Low fuel warning light, 'Light on' reminder	■

Equipment.

■ Standard

	Mii electric
Safety and security	
Anti-lock brake system	■
Driver and front passenger airbags with front passenger de-activation, side airbags in front with curtain airbags	■
Electronic engine immobiliser	■
Electronic Stability Control (ESC)	■
Front and rear seatbelt reminder	■
Hill hold control	■
Lane assist	■
Locking wheel bolts	■
Remote central locking with safelock	■
Traffic sign recognition	■
Tyre pressure monitoring	■

Option prices.

	Basic price	VAT @ 20%	Recommended retail price
Charging			
Charging cable – Mode 2 cable (three pin socket, 10amp)	£133.33	£26.67	£160.00
Seats and trim			
Easy flex – Double floor boot, hook in glovebox, height adjustable passenger seat	£58.33	£11.67	£70.00
Exterior equipment			
Contrast roof in Deep Black with matching door mirrors	£0.00	£0.00	£0.00

Technical data.

Mii electric	
Engine	
Type (cylinders / valves per cylinder)	Permanent magnet synchronous electric motor
Maximum power (PS / kW / rpm) ¹	61(83), 2,750-11,000
Maximum torque (Nm / lb.ft / rpm)	212,-2,750
Fuel type	Electric
Performance	
Maximum speed (km/h)	130
Maximum speed (mph) ²	81
Acceleration 0-31mph (s)	3.9
Acceleration 0-62mph (s)	12.3
Fuel consumption ³	
Electric consumption (kWh/100km) (WLTP)	14.4-14.9
Range (km) (WLTP) [^]	Combined 250-259 / City 349-358
Range (miles) [^]	160 / 223
Efficiency label	A+

Mii electric	
CO ₂ emission (WLTP)	
CO ₂ (g/km)	0
Transmission	
Gearbox type	EQ210-1P
Chassis	
Front suspension	Independent type McPherson, coil springs, hydraulic dampers, Stabilizing bar Ø 18 mm
Rear suspension	Semirigid rear axle, coil springs, hydraulic dampers
Steering system	C-EPS (Column Electric Power Steering)
Turning circle diameter [wall to wall] (m)	9.8
Braking system	
Anti-lock Braking System (ABS)	ABS Standard, Option ESP
Type (front/rear)	Ventilated front brakes / Drum brakes in rear axle
Front discs (mm)	256x22
Rear discs (mm)	200x40

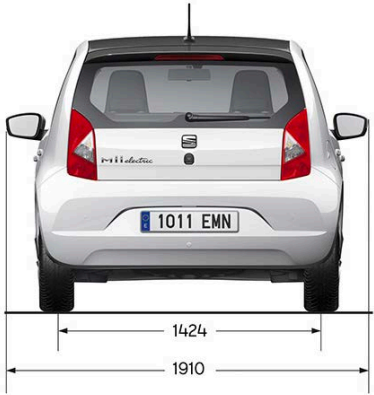
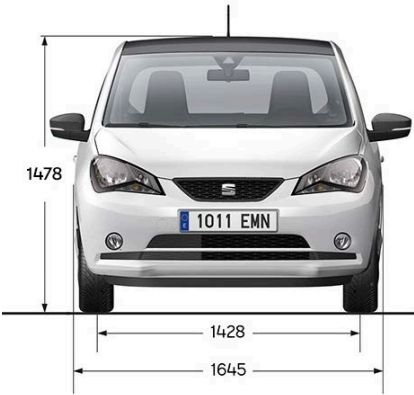
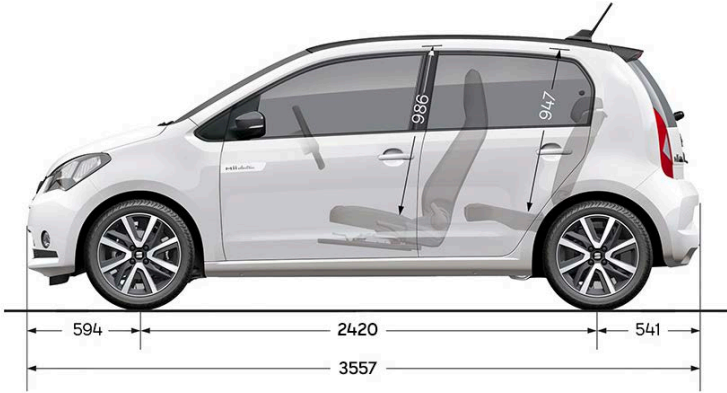
1. The maximum power output figures are quoted in PS (or Pferdestärke, which is the metric equivalent of horsepower). To convert from metric to imperial horsepower, divide the PS by 1.0139.

2. Where law permits.

3. These figures were obtained after the battery had been fully charged. The Mii electric is a battery electric vehicle requiring mains electricity for charging. Figures shown are for comparability purposes. Only compare fuel consumption, CO₂ and electric range figures with other vehicles tested to the same technical procedures. These figures may not reflect real life driving results, which will depend upon a number of factors including the starting charge of the battery, accessories fitted (post-registration), variations in weather, driving styles and vehicle load. Zero emissions while driving. Data correct at 01/04/2021.

Technical data.

Mii electric	
Wheels	
Rims and tyres	6J X 16", 185/50 R16
Dimensions	
Max length / width / height (mm)	3557 / 1645 / 1478
Max wheelbase (mm)	2420
Max track front / rear (mm)	1428 / 1424
Boot capacity (l)	251
Weights	
Kerb weight [with driver] (kg)	1235
Max weight allowed (kg)	1530
Battery	
Battery type	Lithium-ion battery
HV-Battery (kWh)	36.8
Battery voltage (V)	307
Charging time AC 7,2 kW 80%	4:00 hrs
Charging time DC 40kW 80%	1:00 hrs





Vehicle excise duty.

All new vehicles are subject to a form of Vehicle Excise Duty (VED) based on the type of fuel the vehicle uses and its carbon dioxide (CO₂) emission level, measured in grammes per kilometre (g/km). The table below illustrates the duty you will pay based on the DVLA bandings.

12-month Road Fund Licence (RFL) rate for petrol and diesel cars: Cars registered on or after 1 April 2021

CO ₂ g/km	1st year rate – Petrol / Diesel	1st year rate – Alternative Fuel Vehicles (AFVs)
0	£0	£0
1	£10	£0
51	£25	£15
76	£115	£105
91	£140	£130
101	£160	£150
111	£180	£170
131	£220	£210
151	£555	£545
171	£895	£885
191	£1,345	£1,335
226	£1,910	£1,900
256	£2,245	£2,235

The standard rate for Petrol and Diesel is £155 and £145 for Alternative Fuel Vehicles. Please be aware vehicles with a list price (RRP), including options, higher than £40,000 will incur an additional £335 a year in vehicle tax, from the second time the vehicle is taxed.

For full details please refer to gov.uk/vehicle-tax-rate-tables

Benefit in Kind.

For electric cars, the Government has announced it will cut BiK rates for zero-emissions vehicles down to 0% during the 2020-21 financial year, rising to just 1% in 2021-22 and 2% in 2022-23.

Mii electric	CO ₂	P11D	BIK	Monthly car tax
2020/21	0	£22,800	–	–
2021/22	0	£22,800	1%	£3.80
2022/23	0	£22,800	2%	£7.60

Warranties & service plans.

☐ Optional

Extended Warranties		All trims	Basic price	VAT @ 20%	Recommended retail price
When you buy a new SEAT it is covered by a 3 year/60,000 miles manufacturer warranty. You can extend this cover, with a 4 year/75,000 miles or 5 year/90,000 miles SEAT Extended Manufacturer Warranty, and get the same level of cover. It is fully transferable to a new owner if you decided to sell your SEAT.	4 years/75,000 miles	<input type="checkbox"/>	£115.00	£23.00	£138.00
Please note: The SEAT Extended Manufacturer Warranty is only available at the time of ordering a new SEAT.	5 years/90,000 miles	<input type="checkbox"/>	£212.50	£42.50	£255.00

Extended Warranty for existing owners: If your existing warranty is about to expire, or if you haven't already got one in place, our Extended Warranty* is designed to protect you. For a quote, visit insurewithseat.co.uk

*SEAT Financial Services is a trading name of Volkswagen Financial Services (UK) Limited. SEAT Extended Warranty is sold and administered by Lawshield UK and underwritten by Volkswagen Versicherung AG. Terms, conditions, and eligibility criteria apply.

Service plan		All trims	Upfront payment	or	Monthly cost
New Fixed Price Service Plans are available for cars up to 12 months. You always know where you are with our fixed price plans which are inflation proof. Available at participating SEAT Retailers.	Includes 1st and 2nd service	<input type="checkbox"/>	£393.22		24 monthly payments of £16.38
Go to seat.co.uk/bookservice					
Prices are subject to change.					

The SEAT Warranty

Three-year Warranty.

All new SEAT's registered in the UK come with a three-year/60,000 miles warranty, which protects your car against the failure of most mechanical and electrical components due to manufacturing defects. This comprises a two-year manufacturer's warranty with unlimited mileage plus a further one-year/60,000 (whichever is soonest).

Retailer Warranty.

Should the mileage exceed 60,000 miles within the first two years, the manufacturer's two-year warranty will still be valid. If an additional warranty for subsequent years or higher mileage is desired, it may be purchased from an authorised SEAT Retailer or repairer, however, this additional warranty must be purchased before the mileage reaches 60,000. Cover is subject to the car being serviced and maintained according to the manufacturer's technical guidelines. Full details of the three-year warranty are available from your SEAT Retailer or repairer.

Warranties & service plans.

SEAT Extended Manufacturer Warranty

If you take out a SEAT Extended Manufacturer Warranty before your new car is registered, you'll get exactly the same level of cover as the three year warranty, but for up to five years. You can choose a SEAT Extended Manufacturer Warranty to last until the end of the 4th year/up to 75,000 miles or until the end of the 5th year/up to 90,000 miles (whichever is soonest). Please note: SEAT Extended Manufacturer Warranty products are only available at the time of ordering your new SEAT.

Battery warranty

SEAT guarantees 8 years of battery lifetime and/or 100,000 miles driving distance. Therefore the battery capacity will not fall below 70%.

Three-year Paint Warranty

The paintwork of all models featured in this price list is covered against manufacturing defects for a period of three years. Naturally, the vehicle must be cared for in compliance with the operating instructions which will be found in your vehicle handbook. Please consult your authorised SEAT Retailer or repairer for full warranty details.

Twelve-year Body Protection Warranty

The internal body sections and panels of the models featured in this price list are covered against rusting through from the outside for twelve years.

Naturally, the vehicle must be cared for in compliance with the operating instructions which will be found in your vehicle handbook. Please consult your authorised SEAT Retailer or repairer for full warranty details.

SEAT Parts Warranty

SEAT parts and accessories supplied after new vehicle delivery are covered by our 24 months parts warranty.

SEAT Car Insurance

Complimentary drive away cover

We want you to start enjoying your car from day one, and with our 5 day Drive Away Insurance you can. Our comprehensive cover is designed specifically for SEAT drivers, and offers many features and benefits as standard. To activate, simply call 0345 246 3519. If you are eligible, we will also provide you with an annual quotation giving you the option to purchase 12 months cover. Subject to eligibility. Five day drive away insurance cannot be used in conjunction with any other insurance offer.

Annual Car Insurance

If you take out a new SEAT Car Insurance* policy, you will receive the following benefits as standard:

- SEAT Approved Repairs carried out by SEAT Approved technicians using only GenuineParts and Paints
- Guaranteed courtesy car
- Windscreen cover

- Uninsured driver promise
- 24hr accident recovery
- Personal accident cover
- Personal belongings cover
- Child seat replacement

For more information or to get a quote, please visit insurewithseat.co.uk or alternatively call us on 0345 877 6555. We're available Monday to Friday 8am-8pm and Saturday 9am-5pm.

SEAT Roadside Assistance (including European cover)

Any new SEAT purchased and registered in the UK from an authorised SEAT Retailer, is covered free by SEAT Assistance (including European cover) for roadside repairs or recovery to an authorised repairer for a term of two years. Terms and conditions apply.

Specifications

Specifications refer to Model Year 2021. While SEAT makes every effort to make sure that specifications are accurate at time of going to press (01/04/2021), you should always check details with your SEAT Retailer as there may have been changes in view of SEAT's policy of continuous product improvement. The right is reserved to change specification and colour at any time. The information in this price list can therefore be given as guidance only.

*SEAT Car Insurance is underwritten by U K Insurance Limited. Registered Office: The Wharf, Neville Street, Leeds LS1 4AZ. Registered in England and Wales No. 1179980. U K Insurance Limited is authorised by the Prudential Regulation Authority and regulated by the Financial Conduct Authority and the Prudential Regulation Authority. Calls may be recorded. SEAT Financial Services is a trading name of Volkswagen Financial Services (UK) Limited ("VWFS UK"), registered in England and Wales No.2835230 (registered office: Brunswick Court, Yeomans Drive, Blakelands, Milton Keynes MK14 5LR). Volkswagen Insurance Service (Great Britain) Ltd is an appointed representative of VWFS UK. VWFS UK is authorised and regulated by the Financial Conduct Authority, registration number 311988. Authorisation details for both organisations can be checked on the Financial Services Register by visiting fca.org.uk. VWFS UK and U K Insurance Limited are not part of the same corporate group.



SEAT is committed to a policy of continuous product development and reserves the right to make changes to specifications, colours and prices without notice. The information in this brochure can therefore be given as guidance only. While SEAT makes every effort to ensure that specifications are accurate at the time of publication, you should always check with your authorised SEAT Partner for the latest information.

Due to limitations of the printing process the colours reproduced in this brochure may vary slightly from the actual paint colour and material. This vehicle and all its parts, as well as the original spares, were designed according to the Legal Regulations governing the prevention and minimisation of Environmental Impact, through the use of recycled/recyclable materials, with measures taken to achieve suitable recycling for the conservation and improvement of environmental quality.

Published in the UK, April 2021.

seat.co.uk